



**Cherwell local
strategic Partnership**

**Breaking the Cycle of Deprivation
and Tackling Health Inequalities**

**The Brighter Futures in Banbury
Programme**

Draft Annual Report 2013/14

Contents

1. **Foreword**
2. **Overview of the Brighter Futures in Banbury Programme**
3. **Progress Update 2013/14**
 - Theme 1: Early Years, Community Learning and Young People's Attainment
 - Theme 2: Employment Support and Skills
 - Theme 3: Family Support and Young People not in Employment, Education or Training
 - Theme 4: Financial Inclusion and Housing
 - Theme 5: Health and Well-being
 - Theme 6: Safer and Stronger Communities
4. **New Funding Initiatives in 2013/14**
5. **Looking Forward - Priorities for 2014/15**
6. **Contact details**

Appendix 1 -
Programme Performance Measures

How to contact us:

Louise Tustian
Performance and Insight Team
Cherwell District Council, Bodicote House
Banbury OX15 4AA

Tel: 01295 221786 or Email: louise.tustian2@cherwellandsouthnorthants.gov.uk



**BRIGHTER FUTURES
in Banbury (BFiB)**



1. Foreword

Brighter Futures in Banbury: a strong long term partnership programme delivering new opportunities, innovative projects and high quality services in Ruscote, Neithrop and Grimsbury and Castle Wards.

The Brighter Futures programme is now moving into its fifth year, and as we look back on our achievements I can say that we continue to make progress and remain as focused on its goals as ever.

Brighter Futures is about ensuring that the wealth of opportunities and high quality of life we enjoy in Banbury is accessible to all, regardless. Our aims are outlined in detail throughout this report, but for me the most important elements of the programme are ensuring young people growing up in the area have opportunities to build a future through access to training and education, family support where needed, and are able to grow in strong and safe communities.

The programme is rooted in strong partnership working and you will see many examples in this report of partnership in action, whether it be directly funding local community groups to provide services or sponsor new projects or working with local business to help match skills to jobs.

During 2013/14, we have continued to meet our objectives and address the challenges we face. In November 2013, we increased our organisational effort through a highly successful partner's engagement event held at Prodrive in Banbury. This was particularly focussed on the education sector, faith communities and other voluntary groups. Arising from this, not only was there additional multi agency activity but we engage a greater number of locally active bodies in targeted local effort and from the feedback we received, there was a call for similar events in the future.

I'm particularly proud of the work that we have done to involve and engage local communities. The Early Intervention Hub is a shining example of locally provided services that directly meet the needs of young people and their families in an accessible and friendly environment. Our provision of affordable housing and skills development through the self-build programme is innovative and nationally recognised and our programme of support to people seeking work remains strong. Indeed, across the whole programme we have seen good performance and the bullet points below provide a summary that is explored in more detail in the main body of this report.

- A second year reduction (almost a third reduction) in the number of people claiming job seekers allowance
- A second year reduction in the number of young people not in education, employment or training
- An improvement in the number of pupils reaching the required standard in writing at Key Stage 1.

- Banbury Academy has substantially increased the number of pupils attaining A*-C in English and Mathematics
- On-going reduction in the number of recorded crimes including anti-social behaviour and criminal damage
- The establishment of a Credit Union
- All three children's centres in the Brighter Futures area, East Street, Britannia Road and Sunshine Centre have been recently judged 'good' by Ofsted.
- 25 new social housing units have been delivered in the Brighter Futures area
- Increased take up of health screening and smoking quitters, reduction in teenage pregnancy and good take up of carer's breaks.

As a partnership we've worked to address new challenges such as welfare reform with a series of workshops to communicate the new requirements and ensure that local partners are working effectively together.

This year, Cherwell District Council has made a number of small funding awards to help start new initiatives and projects which are of direct relevance to the Brighter Futures programme priorities. A summary of these can be found in Section 4.

Looking forward we remain committed to the programme's objectives and seek to capitalise on our exceptionally strong local partnerships. During 2014/15 we will be delivering a programme of local community events, providing support to ensure that welfare reform transition goes smoothly, continuing to support skills development and affordable housing through our award winning 'build' project. We will also be working to increase local apprenticeships and supporting economic development partners to improve the employment prospects for young people.

The coming years will continue to be challenging. The impact of the recession, reducing public expenditure and changes to policy mean that scarce resources will need to stretch further and partners will need to work together to support local communities and businesses through these changes. With this in mind, the Local Strategic Partnership (LSP) and the Brighter Futures in Banbury Steering Group will be focusing attention on areas where this programme can make a real difference with the resources available.

In the last year we have focused on the delivery of joined up services, innovative projects and delivery of new opportunities for local people. Our aim for 2013/14 is to continue this work, to renew our efforts and work to support local communities, business and community groups make Banbury a thriving and economically sustainable town, a great place to live, work and raise a family.

Councillor John Donaldson
Cherwell District Lead Member for Brighter Futures in Banbury

2. Overview of the Brighter Futures in Banbury Programme

Cherwell Sustainable Community Strategy - Our District, Our Future

The Cherwell Sustainable Community Strategy, Our District, Our Future, was launched in February 2010, following extensive consultation with over 100 local organisations and community groups. This strategy sets out a long term vision for the future of the district and shapes how the Local Strategic Partnership will work together. The Brighter Futures in Banbury programme is a fundamental part of delivering this shared vision; 'a diverse economy with opportunities for all, vibrant communities connected by a sense of pride, place and purpose'.

Brighter Futures in Banbury is a targeted programme of work, set up to increase life chances and address health inequalities within three wards in Banbury. A priority within Our District, Our Future is to tackle areas which rank on the lower end of the Indices of Multiple Deprivation. There are several areas in Banbury across the three wards of Ruscote, Neithrop and Grimsbury and Castle which rank amongst the 20% most deprived in the country.

Brighter Futures in Banbury – Programme Aims and Objectives

The programme is entering its fifth year and has a long term aim 'to create brighter futures for Banbury people', by tackling evidenced disadvantage and health inequality. The overall aim is to break the cycle of deprivation, but it is recognised that route to a brighter future will be different for each individual. This programme recognises that individuals have diverse needs covering issues around health, skills, access to services, housing and financial stability.

For individuals to realise their full potential the basic ingredients need to be right: a decent home and physical surroundings, access to services and opportunities, secure income, good health and well-being, a feeling of safety and a sense of connection or belonging in the local community.

There has been considerable investment by many agencies over many years into deprivation and health inequalities. For example, the Council's stock transfer to Charter Community Housing in 2004 created the investment needed to bring many of the homes in the area far above a minimum decent standard. However, on-going research highlights the areas of Ruscote, Neithrop and Grimsbury and Castle as being where this programme should focus, particularly to:

1. improve skill levels and educational attainment
2. improve employability, focusing particularly on young people
3. improve financial situations, addressing debt and financial inclusion
4. improve educational attainment through better numeracy skills and family engagement
5. good quality mixed housing, affordable and in well managed environments
6. good access to amenities including shops, health centres and leisure facilities

7. improve life expectancy with improved overall health and well being
8. reduce the clear inequality gaps with low life expectancy
9. reduce the high rates of teenage pregnancy
10. build a safer more connected community where residents feel socially included
11. target specific support to vulnerable people, families and children in need

But this programme is not all about new initiatives, much will be about improving the outcomes from current activities through better co-ordination, co-location and better multi-agency working.

This programme has long term aims and objectives as listed above, however it also aims to adapt to changing circumstances and respond to local needs. As part of this each of the themes across the programme has responded to the on-going economic challenges that have an inevitable impact on the local area, its businesses and economic wellbeing.

Likewise where new policy provides an opportunity to do things differently the programme responds to these. Examples over recent years have included early adoption of the 'Thriving Families' agenda, implementation of strong partnership approaches to early intervention through the Banbury Hub, proactive work to address the impacts of welfare reform and the use of Local Strategic Partnership Funds to directly support projects that support the programme objectives.

This report sets out the key themes that made up the programme during 2013/14 and some of their associated work to improve the lives of residents in the least affluent areas of Banbury. It also looks forward, setting out new priorities and areas of focus for 2014/15.

In addition to the themes in the Action Plan, there are three core principles for this programme:

- community engagement and consultation
- raising aspiration and ambition
- capacity building through multi agency working

Lead Partners involved in the direct delivery of the programme's work themes

Cherwell District Council

Oxfordshire Clinical Commissioning Group

Oxfordshire County Council

Thames Valley Police

Six Themes to Deliver the Programme Objectives

Programme Objectives	Theme	Key Priorities
<ul style="list-style-type: none"> → improve educational attainment through better numeracy skills and family engagement → improve skill levels and educational attainment 	<u>Theme 1</u> Early Years, Community Learning and Young Peoples Attainment	Ensuring children get off to the best start in life, that young people, families and communities are supported in their aspirations and educational attainment
<ul style="list-style-type: none"> → improve skill levels and educational attainment → improve employability, focusing particularly on young people 	<u>Theme 2</u> Employment Support and Skills	Working with local residents and businesses to support skills development, access to training and employment support.
<ul style="list-style-type: none"> → Target specific support to vulnerable people, families and children in need → improve employability, focusing particularly on young people 	<u>Theme 3</u> Family support and young people not in employment, education or training	Supporting children, young people and families with complex needs.
<ul style="list-style-type: none"> → improve financial situations, addressing debt and financial inclusion → good quality mixed housing, affordable and in well managed environments → good access to amenities including shops, health centres and leisure facilities 	<u>Theme 4</u> Financial Inclusion and Housing	Ensuring there are accessible advisory and support services for those facing challenging financial situations and delivering high quality affordable housing options and opportunities
<ul style="list-style-type: none"> → improve life expectancy with improved overall health and well being → reduce the clear inequality gaps with low life expectancy → reduce high rates of teenage pregnancy 	<u>Theme 5</u> Health and Wellbeing	Improving life expectancy and reducing health inequalities through improved health and well-being
<ul style="list-style-type: none"> → build a safer more connected community where residents feel socially included 	<u>Theme 6</u> Safer and Stronger Communities	Reducing crime and anti-social behaviour and ensuring local residents feel safe

3. Progress Update 2013/14

Theme 1: Early Years, Community Learning and Young People's Attainment

This theme aims to ensure that children get off to the best start in life, that young people, families and communities are supported in their aspirations and that educational attainment supports opportunities to build a long term economically independent futures. It has two main objectives:

- ➔ To improve attainment at all levels through better numeracy and literacy skills and family engagement
- ➔ Focusing on the needs of vulnerable families accessing pre-school and using local child-minders and children centres and to reduce exclusions in Banbury

Working to improve educational attainment outcomes across all key stages To improve attainment at all levels through better numeracy and literacy skills

This year there have been many key achievements for this theme- outlined in more detail below. See also appendix for further details. (Please note there are only primary schools in two of the wards - Grimsbury and Castle and Banbury Ruscote)

- Achievement overall has improved (2013 end of year data) in the Grimsbury and Castle ward significantly.
- Children entitled to pupil premium funding in Grimsbury and Castle and Banbury Ruscote are achieving at least in line with Oxfordshire or better. (Appendix 1a)
- There has been an increase in the number of Year 1 children who reach national standard in phonics screening – preparing children better for success in reading at an early age.(Appendix 1f)
- The proportions of pupils making expected progress in reading and writing by the time they leave primary school has increased over the past two years and this is at least in line with the national average.(Appendix 1e)
- There has been an improvement in the number of pupils reaching the required standard in writing at Key Stage 1 compared to 2012 (Appendix 1e)
- Children with SEN attain in line with Oxfordshire in Grimsbury and Castle. (Appendix 1b)
- Targeted training (with the Maths and Literacy Consultants and Early Years Team) is provided for schools in Ofsted categories (Requires improvement I and Inadequate) to aid transition from EYFS to KS1 in Brighter Futures area. High take up from schools.
- Schools have access to a range of training brokered by the LA and all have participated in a variety of packages tailored for their needs e.g. teaching phonics; subject leader training; pupil tracking and monitoring data; new national curriculum.

- Good links have been established with Banbury and Bicester College and joint activities with primary schools are taking place.
- At secondary level Banbury Academy has substantially increased the number of pupils attaining A*-C in English and Mathematics in 2013. Whist at North Oxfordshire Academy value added for best 8 (GCSEs and equivalents) is significantly stronger than national, first achieved in 2012 and consolidated in 2013. This is achieved by using level 2 courses beyond GCSE. BGN has strong Value Added in mathematics, science and humanities this year.
- All practitioners have access to web pages, an e newsletter, training courses, advice and guidance and business support officers to help improve the quality of provision for young children and their families.
- A project focusing upon improving children's language, reading and writing skills is running in the Banbury area from September 2013-July 2014. Pie Corbett an author and consultant will work with practitioners from schools and settings and children's centres focusing upon raising attainment in our youngest children. This is a joint venture with schools, the hub and LA.
- Recently a project was undertaken by the Centre of Research in Early Childhood (part of The University of Birmingham). The research was designed to capture the voices of children, families, practitioners and professionals working in the county to inform plans for future commissioning and delivery so that the Foundation Years in Oxfordshire are innovative, aspirational, inspirational, cost-effective and sustainable. This report is available on request.
- There 24 child-minders registered on the Early Years register working in the 3 wards. 7 of the 24 are waiting for their first OFSTED inspection. Of the 17 that have been inspected 10 have a good or outstanding Ofsted judgement which is 58%. Training and support is offered to child-minders to improve their practice and best prepare for their Ofsted inspection visits.
- Governing bodies have been targeted for support to enhance leadership and management of schools. Additional support has been given to St Mary's CE; St Joseph's RC and Orchard Fields. Governor services training continues to be accessed well by schools in Banbury

To improve family engagement and focus on the needs of vulnerable families accessing pre-school and using local child-minders and children centres reducing exclusions in schools.

- All three children's centres in the Brighter Futures area, East Street, Britannia Road and Sunshine Centre have been recently judged 'good' by Ofsted.
- It is estimated that there is a total of 1,524 families with children under five living in the reach areas of these centres. 1,405 families are registered at the children's centres (91%) and 922 have received a service from the children's centres (60%) for the year Jan – Dec 2013
- Children's centres also provide courses for parents to develop their own learning. During the year 40 courses for parents have run in the three children's centres in the Brighter Futures area. Courses range from healthy cookery to accredited courses in Maths and English.

- The Children's Centres have been very successful in contacting families who are entitled to two year old funding. As vulnerable families often have difficulties in responding, all families have been contacted face to face and supported in form filling if necessary. This has ensured that the most disadvantaged children are receiving childcare. The children's centres are the main referring agency for this entitlement.
- Children's centres help parents in improving the home learning environment from birth so that children can benefit from the opportunities open to them when they go to school. Specific examples this year are the Time for Me group at East Street which offers respite support for families in crisis and/or children who have specific needs. The Spirals group at the Sunshine Centre is a group for linguistically vulnerable children who may struggle with confidence in a larger group. At Britannia Road a new partnership with Adult Learning has developed the Learning Matters course which supports parents in understanding how children learn and develop.
- Children's centres focus on improving outcomes for young children and their families, in order to reduce inequalities in child development and school readiness parenting aspirations, self-esteem and parenting skills and child and family health and life chances. The core purpose is achieved by assessing the need in the local community, providing access to affordable services, using targeted evidence based interventions and acting as a hub for the local community. All services are integrated and include services delivered by health professionals and many other agencies. Many families receive one to one support (200 families this year) including some families who are on child protection plans.
- Lone parents with children under five living in the Brighter Futures area have received a service from the children's centres as follows Britannia Road 18.37%, East Street 35.42%, Sunshine Centre 56.41%.
- The number of workless families accessing a children's centre Jan-Dec13 is 256 which is 88% of the families with children under five living in the Brighter Futures area who are in receipt of workless benefits. Children's centres are now recording the number of families who have a positive Achieve Economic Wellbeing outcome For the year Jan-Dec13 33% of workless families accessing a children's centre in the Brighter Futures area have achieved a positive outcome in relation to economic wellbeing.
- The number of fathers attending across all 3 centres has increased by 3% during the year.
- 31 teenage parents across all 3 centres have accessed a service from the children's centre.
- The percentage of BME families reached as % of BME population for the period Jan – December 2013 for the three centres together is 33%. This is a 5% increase on the previous year.

- Information calculated by DfE states in autumn 2013 there were 18 children eligible for 2 year old funding living in the Britannia Rd Children's Centre reach area, 21 living in East Street reach and 46 living in Sunshine reach. Take up figures show that 66.7% of 2 year olds in Britannia Road area received a childcare place ; 75% children in East Street area received a place; 71.9% of eligible 2 year olds in the Sunshine Centre reach area received a place.
- Information calculated by DfE states in summer 2013 there were 16 children eligible for two year old funding living in the Britannia Rd Children's Centre reach area, 41 living in East Street reach and 75 living in Sunshine reach. Take up figures Aug 13 show 13 two year olds in Brit Road area received a childcare place (81%); 13 children in East Street area received a place ((32%) and 34 children in Sunshine reach area received a place (45%).
- Of the two year olds eligible for the 2 Year Old Entitlement who have gained a childcare place the following percentages apply for those attending good or above settings in the 3 children's centre reach areas.
 - Britannia Road 69%
 - East Street 100%
 - Sunshine Centre 94%
- Developing a secondary inclusion resource at Banbury secondary schools to improve attendance and reduce the need for exclusions, linking to police to develop restorative practice approach and local businesses to provide positive opportunities for young people. This work is led by the Banbury hub.

Further information:

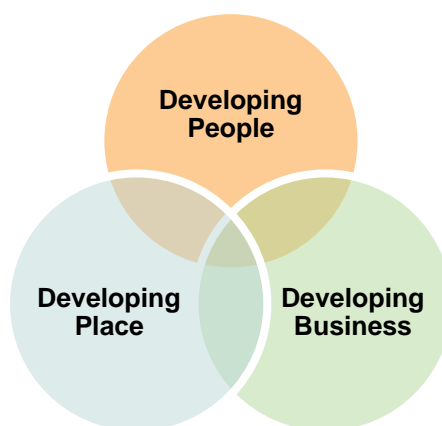
Theme Leads: Pam Beal / Sue Currie / Michelle Jenkins
Oxfordshire County Council

Key Partners: Any voluntary sector group pertinent to a particular issue would be invited onto the theme sub-group: Other link agencies/ staff are:

- Links to schools and other county services – adult learning, family learning, extended schools services, children's centres and libraries. Family learning in children's centre provides an opportunity for community engagement.
- Strong links to schools and other county services around education and attainment – adult learning, family learning, extended schools services, children's centres and libraries.

Theme 2: Employment Support and Skills

For 2013/14 this theme focused upon the three primary objectives outlined in the Cherwell economic development strategy. They aimed to promote all aspects of economic development in a coherent way; supporting local people, local business and creating a local environment in which the economy can thrive.



The priorities for action were grouped around these three key objectives:

1	Developing people: help into work through skills, apprenticeships and job clubs
	<ul style="list-style-type: none"> • Run weekly Job Clubs in Banbury • Increase the number of apprenticeships available locally • Enhance work readiness skills for young people through the Skidz motor project

The number of Job Seeker Allowance claimants in Cherwell fell consistently during 2013 from 1,435 (1.6%) in March 2013 to 865 (0.9%) in Dec 2013, and remained at that low level through to March 2014. In the Brighter Futures Wards the picture shows significant reductions in the number of those unemployed and claiming Job Seekers Allowance, as shown below:

Ward	03/2013	03/2014	+/-
Banbury Ruscote	3.8%	2.3% (119)	-1.5
Banbury Neithrop	3.3%	2.0% (72)	-1.3
Banbury Grimsbury and Castle	3.1%	1.9% (132)	-1.2

Job Clubs have been successful:

The Banbury (fortnightly) job club marked its fifth anniversary in Feb 2013, having had over 8,000 visits from job seekers during that time, most of whom have moved

into work or training. In April 2009, for instance, Grimsbury ward had a JSA claimant level of 5.4% (375) but is now at 1.9% as shown above.

During 2013/14, additional resources were invested into job clubs in Banbury serving the Brighter Futures wards through Oxfordshire Local Enterprise Partnership / County Council and volunteer coaching of managers/professionals enabled by Cherwell District Council.

The breadth of support included group workshops, one-to-one coaching, action to engage long-term claimants and – importantly – continuous support throughout the year. Indeed, the Banbury job club partners have provided job club support every day Monday to Friday. Other notable achievements during the year include:

- A Saturday event was held at the Hub to support families with young children to prepare themselves to find work; this support has continued through the partnership.
- Close working closely with Banbury Food Bank has provided added support into training or work for people facing acute hardship.
- The new credit union is being provided with an outlet through the job club.
- Joint working with the Cherwell Disability Forum has helped people with disabilities to enter training and work.

A Job Fair held in Feb 2014 attracted around 200 people job seekers of all ages, some of whom were simply seeking to change jobs and were attracted by the employers present. The high profile marketing campaign ensured that new job seekers were engaged in the job club support partnership.

Apprenticeships have been provided:

Leading by example, Cherwell District Council employed a third cohort of Business & Administration Apprentices throughout 2013. The apprentices completed their 12 month contract, having passed their NVQ2 tests and completed coursework whilst gaining valuable experience and skills to become 'work-ready'. The contracts have been extended until summer 2014 and several of the apprentices have already gained work positions with other local employers.

Apprentice's open events were held for local young people for example at Mini in Oxford and at North Oxon Academy to provide access to information about apprentice opportunities for themselves and their families in preparation for 2014-15 and beyond. Support and referrals to Oxfordshire Apprenticeships service continues, leading to an increasing numbers of employers participating in apprenticeship schemes.

Work readiness skills have been enhanced:

Unfortunately, the Skidz motor project to help disaffected young people build their skills to continue learning and/or enter work ceased during the year. Schools are now using other services to meet this need but the success of Skidz providing intensive support to young people over many years is recognised.

Traineeships and placements were provided by businesses and the councils to school children. Entrepreneurial young people were also supported through the North Oxfordshire Young Enterprise Award scheme, arranging events to engage school pupils with employers.

2 Developing business: promoting enterprise and jobs for all

- Increase business investment and expansion
- Reduce unemployment levels (as measured by the number of claimants)

Many businesses have invested & expanded:

Over 100 business development & investment enquiries were handled by the economic development service of Cherwell District Council which also led the Cherwell Investment partnership www.cherwell-m40.co.uk Examples of businesses expanding within the Brighter Futures with the support of the service are Kannegeisser and Norbar, with inward investor Stewart Plastics providing valuable additional employment in a large facility that had been empty for some years.

The range of skills required by Banbury businesses has usually been met from within the local area although some higher skilled professional or technical jobs are remaining vacant for some months. Enhanced links between schools/colleges and employers are seeking to address this matter but it is clear that the training providers careers guiders must respond to the future needs of businesses.

Banbury & Bicester College is increasingly providing for such educational needs and has opened new facilities at its Banbury campus. It is also seeking to enhance its Bicester campus to meet the growing need for sustainable construction skills and has been awarded funding to construct a 'Studio School' for 14-19 year olds specialising in construction and logistics technologies.

To provide further connection with skills and employment, a Partnership Day was held in November 2013 at Prodrive Ltd to engage businesses with partners involved in the Brighter Futures regeneration programme. This proved to be a successful way for partners to understand the needs of employers in relation to workforce skills required and the opportunities that exist in the town to work with world-class employers.

Unemployment levels have decreased:

As explained above, the three wards have experienced significant reductions in Job Seeker Allowance claimants, with around one third fewer in March 2014 when compared to March 2013. Job Clubs and other partnership work appear to have been very helpful but the wider improvement in the national economy and actions by individual employers have all undoubtedly contributed to this positive situation. Challenges remain, however, to provide intensive help to those people facing long-term unemployment, to assist lone-parents into work and to ensure that workforce skills meet the needs of employers.

Entrepreneurialism has also been directly supported during 2013-14 through Cherwell District Council co-ordinating the Oxfordshire Business Enterprise service. www.oxonbe.co.uk Clients' satisfaction with the service was over 99% with residents of Brighter Futures wards being amongst the clients who have progressed on to start their own business through tailored one-to-one advice.

3 Developing place: creating an environment that works

- Work to ensure new sites for employment are created through the Local Plan.
- Undertake environmental improvement projects which enhance the appearance of the wards to encourage further investment

New employment sites have been identified:

The Local Plan submitted to Government for Inspection also contains policies to safeguard existing employment sites in and around the Brighter Futures wards, alongside supplementary sites for the period up to 2031. A considerable amount of research has been conducted for the preparation of the plan and it is publicly available to ensure that businesses and agencies can utilise it in their own business planning. This work should ensure that the long-term needs of residents and businesses of the Brighter Futures wards are planned for.

Environmental works

In addition to the day-to-day maintenance of the street-scene and parks by councils, additional 'blitzes' have taken place in the Brighter Futures wards.

Working with Banbury Chamber, an action group of businesses has been established in Neithrop (on Beaumont Rd). Issues and opportunities have been identified for mutual collaboration on during 2014-15. If appropriate, action groups will also be enabled in Grimsbury (for Thorpe and Wildmere business estates).

Further Information

Theme Lead

Steven Newman
Cherwell District Council

Theme 3: Family Support and Young People not in Employment, Education or Training

The primary focus of this theme is providing support to children, young people and their families with complex and diverse needs. The project uses an early intervention approach and aims to ensure that young people can make the most of the opportunities available to them. As well as providing support to families with specific needs, such as young carers, the objectives within this theme aim to prevent issues before they occur and work undertaken includes diversionary activities to prevent anti-social behaviour, crime and school exclusions.

The work undertaken as part of the project is done so out of the Banbury Hub which is based in the Wood Green area of the town. This theme sits alongside the work undertaken by other County Council departments including the children's centre and work supporting educational attainment and early year's development. For 2013/14 the priorities were:

- Reducing the number of young people not in employment, education or training
- Reducing the numbers of young people offending including first time entrants to the criminal justice system
- Supporting young people with inappropriate caring responsibilities
- Supporting children in need

Achievements 2013/14

- ➔ The NEET (young people not in education, employment or training) figure at this time was 9.2%. In December 2013 the figure had reduced to 4.7% exceeding the target of 6.5%
- ➔ 627 Children/young people have been supported through case work, 20% of these also attended Open Access. 67 of these were from the Neithrop Ward; 85 from Grimsbury and Castle; and 200 from Ruscote. The highest referrals to our schemes are from these three wards.
- ➔ 1727 children/young people have accessed Open Access provision. 286 were from the Neithrop Ward; 202 from Grimsbury and Castle; and 675 from Ruscote. The majority of attendance is from these three wards.

Our programme of activities and interventions to reduce the number of 'NEETs' in Banbury includes:

NEET Annual Review Project

A multi-agency team was set up to complete targeted work to contact each NEET young person (actively seeking work) on our database living in Banbury.

To date through our tracking we have found out about or supported 28% (38 out of 132 young people) of the initial project NEET cohort into education, employment or training (this excludes young people who were not available for work through illness or who were not yet ready for work or training).

NEET drop-ins (open access youth sessions) are available at the hub every Thursday throughout the year between 1-4pm. Staff also signpost young people to opportunities and encourage them to participate in learning through open access sessions

Banbury, Employment and Training Forum

This forum meets quarterly (contains 50-60 members) to share information and best practice and generate new activities to reduce the numbers of young people who are 'NEET'.

Working with Job Club Partners

By working together and joining up adult and young people's services we now have job clubs and drop-ins running in all areas of Banbury every day of the week at varied times.

Teens and Toddlers

This programme has a proven track record in reducing unintended teenage pregnancies and post 16 'NEET'. This is currently running at North Banbury Children's Centre with students at risk of becoming NEET from North Oxfordshire Academy. Participants gain an award in interpersonal skills.

Duke of Edinburgh (DofE)

The Duke of Edinburgh open groups allows young people aged 14-24 to participate in the DofE programme outside of school context. The award is highly valued by employers and has proven links to support education, employment and training.

National Citizenship Service

National Citizen Service (NCS) is open to all 16 and 17-year-olds in England. It helps to build skills for work and life, helps young people to take on new challenges and meet new friends. A valuable personal development opportunity for young people to bridge into employment, education or training on leaving School.

Annual Opportunities Fair

This fair is a market place for all 'providers' to display their offer for unemployed young people and their families. Some successful stories last year of young people who were not sure what was available locally and who were able to join training programmes as a result of attending.

Parents with Prospects

A programme for all 16-24 year old parents or parents to be within Banbury who are not in education, employment or training (NEET). Participants gain a level 1 certificate in parenting.

Prospects

For young people aged 16-19 years old or 25 for those who have a learning disability who require more intensive support to find education, training, apprenticeships and employment opportunities.

Youth Contract Mentors – YMCA Training

For young people aged 16 or 17 year olds who are not currently in training, specifically young people who are or were in care, young people who have one GCSE at A*-C (or less than 2 GCSEs) or young offenders released from custody.

Progress Coaches - Skills Training UK

Support for families affected by unemployment, specifically where one member of the family is claiming a working age benefit, the claimant is not working or is working less than 16 hours, the claimant is legally resident in the UK and isn't on the Work Programme..

Banbury Hub Early Intervention Offer to Schools

A full menu of projects and programmes offered to Banbury Primary and Secondary School including workshops designed to support students to engage with their learning including, music, art and cycle and outdoor learning programmes.

Raising Participation Age Strategy

This plan sets out to ensure we work with schools to ensure they are fulfilling their duty in relation to impartial and independent careers advice and linking with employers to increase apprenticeship and learning opportunities.

Youth Engagement and Opportunities Team (YEO)

Part of the work of this team is to collect and use data to track young people after leaving school to ensure they do not become 'NEET'.

OXME website

Oxfordshire's website for young people. It is split into two sub sites, one for young people aged 8-13, the other for young people aged 13-19 (up to 25 where there are difficulties, vulnerabilities, or disabilities). They provide young people, staff, parents and partners with a variety of information and communication tools including e-info bulletins, direct mailing, social networking, secure web chat and more. OXME contains a directory of Foundation Learning Provision and employment and training opportunities available locally.

Volunteering and Mentoring

Volunteering and mentoring programmes are offered by the hub and these can often lead to sustained employment within the County Council or with other employers.

Further information:

Theme Lead: Helen Kilby
Oxfordshire County Council

Key Partners: Any voluntary or community sector group pertinent to a particular issue would be invited onto the theme sub-group, specific activity or initiative.

Theme 4: Financial Inclusion and Housing

The Themes objectives are to ensure there are accessible advisory and support services for those facing challenging financial situations and delivering high quality affordable housing options and opportunities by:

- ➔ Improving financial situations, addressing debt and financial inclusion.
- ➔ Supplying good quality mixed housing, affordable and in well managed environments.
- ➔ Making sure there is good access to amenities including shops, health centres and leisure facilities.

Improving financial situations

Building skills and self-esteem to improve employability are important areas of work in the Brighter Futures context of breaking cycles of deprivation, as well as helping those who already have money and debt problems.

- Citizens Advice Bureau offer a debt and money advice service to all residents 26% clients for general money advice came from the Brighter Futures area
- Volunteer Connect provide opportunities to build transferable skills and improve CVs
- Young residents are supported to improve their employability by BYHP's Unlocking the Potential course, including work experience in a catering social enterprise
- The YMCA youth foundation learning centre offers a variety of courses, work placements and apprenticeships to young people
- The Hill (Bretch Hill) takes a family approach to building skills and personal resilience with budgeting and cooking courses
- Oxfordshire Youth Arts Partnership provide skills building opportunities which also raise young people's aspirations and self-esteem at the Hill
- Sanctuary's Fixers project builds self-esteem and skills such as project planning, media management and team work for young people

Addressing debt and financial inclusion

- Citizens' advice offer a fast track service for those at risk of homelessness and 45% of those who were fast tracked for advice came from the Brighter Futures area.
- The Beacon Centre provides support including access to financial advice for marginalised people
- The food bank offers immediate assistance plus referral to money advice agencies
- Banbury Foyer gives vulnerable young people the chance to develop cooking, budgeting and money management skills

Supplying good quality mixed housing, affordable and in well managed environments.

- 25 new units of affordable accommodation delivered in the Brighter Futures area
- 59 homes in the area improved due to Council interventions

Achievements in 2013/14

Improving financial situations, addressing debt and financial inclusion

Good advice services are key to delivering this theme. Residents can access quality advice when in an emergency, but can also receive services which prevent situations reaching a crisis. For example they can receive budgeting skills training which helps prevent them from falling into debt and improves their disposable income in a way which can enable them to save for the “bumps in the road” which affect all households at some time.

Citizens Advice Bureau

Cherwell supports Citizens Advice Bureau through a contract for advice services. In total 5457 individuals have sought advice from the Bureau during the year 2013/4. 1663 of those individuals gave an address in the Brighter Futures area, 30% of the total.

Much of the work of the bureau is concerned with debt, either personal or housing debt. During the year, for the Bureau as a whole, 24% of enquiries were about debt and 11% about housing.

The Citizens Advice Bureau led a successful bid for Big Lottery funding to form the North Oxfordshire Advice Partnership. The partners are Citizens Advice Bureau, BYHP (who provide support for young people), and Mind (a mental health charity). The funding has enabled them to employ a project worker who will assist the partners in directing people to the right advice first time, sharing good practice and cutting down on duplication. An example of this work is the mental health session which Mind is providing for young people at BYHP.

In addition the Citizens Advice Bureau receives funding from Cherwell District Council and from Sanctuary Housing, for fast track housing advice for people who are at risk of homelessness. 68 people who used this service referred by Cherwell District Council were from the Brighter Futures wards, representing approximately 45% of the people seen in these circumstances.

Brighter Futures Wards – CAB clients					
	Quarter 1	Quarter 2	Quarter 3	Quarter 4	Total
Banbury Grimsbury and Castle	12	8	4	9	33
Banbury Neithrop	1	0	3	6	10
Banbury Ruscote	6	7	3	9	24
Total	19	15	10	24	68

CAB has a two year contract with Sanctuary to support its residents with the impact of welfare reform and pathways back to work, during the last year 83 households were assisted with money management and debt of which twenty six per cent were from the Brighter Futures area.

Volunteer Connect

Funded by Cherwell District Council, Volunteer Connect was started in April 2012 to provide two services: one for volunteering and one for community transport. They are a member of the National Council for Voluntary Organisations, working under the auspices of Banbury Citizen's Advice Bureau.

Volunteer Connect promotes volunteering, liaising with charitable organisations and those who want to volunteer. Volunteers are encouraged develop new skills, meet new people, increase their self -esteem, be involved in their local community, gain work experience and have something current to put on their CV. Feedback from volunteers has been very positive, including:

“I now feel I am giving something back to the local community” and
 “The Charity I volunteer at once helped me, so I feel I am repaying them in some way”

Numbers of volunteers placed 2013/14

Ward	Number of volunteers
Grimsbury and Castle	38
Ruscote	31
Neithrop	12
Total Brighter Futures Clients	81

Credit Union

Credit Unions are community banks which are set up for the benefit of their members. Many people who are refused banking services by mainstream banks can open credit union accounts. They offer small loans at reasonable rates to members who might not be able to access mainstream lending and therefore turn to payday lenders, loan sharks or doorstep lenders.

Cherwell District Council is working with Northamptonshire Credit Union to promote services in the District. A development officer has been appointed to work in Cherwell and South Northants to establish the Credit Union presence and market the services. Over £6,000 of Brighter Futures funding has been awarded to the Credit Union to provide ICT equipment and for publicity to encourage people from the Brighter Futures wards to become more financially included by banking and saving with the Credit Union.

The development officer started in post in February 2014, and has already built contacts with a variety of organisations who operate in the Brighter Futures wards, including the Sunshine Centre and Citizens Advice Bureau, both of which have agreed to act as access points for the Credit Union.

Mortgage Rescue Scheme

Cherwell District Council has been highly successful with the Mortgage rescue scheme and is the highest performer in our region. This is achieved through co-operation with Citizens Advice Bureau who provide the financial appraisal element.

The Hill

The Hill is a youth and community centred based on the Bretch Hill estate. The Hill works with young people and families to take a family based approach to preparing young people for independent life, and developing the skills they need.

The Hill Youth and Family centre held a series of cooking events during the school holidays. 418 meals were provided This had many benefits – children who would normally have been receiving free school meals had access to food during the holiday period, children and parents improved cooking skills and learned how to prepare fresh food and budget friendly recipes. 2 volunteers have gained Food Hygiene Certificates.

Workers at the Hill give informal budget advice, and have noticed an encouraging trend that parents are sharing problems and giving one another advice on budgeting and household maintenance.

BYHP

BYHP works with young people in a variety of situations, including those whose housing situation is vulnerable and also provides youth work across the Grimsbury area.

BYHP runs courses in youth work, wellbeing, and music as well as sports activities to build young people's self-esteem and confidence. BYHP also runs a weekly job club for young people focused specifically on supporting young people into employment. Young people who have attended BYHP have said the following:

- "Dance club gets me off the streets where am just hanging around to making up some great dances" *16 year old at risk of homelessness*
- "This was an opportunity that people like me don't get, cos I am not in school and stuff. It was great to see the sea it's only the second time I have ever been in it!" *14 year old, out of school and working with the youth offending service*
- "Thank you for not giving up on me...I like coming to the centre, you haven't given up on me...I really want to give it a go this year and do the courses" *Young person attending BYHP*

BYHP runs a social enterprise which has been training young people for over 3 years to get experience in catering and customer service through hands on employability support with experienced trainers, funded by the Lottery as part of its 5 year Unlocking Potential programme. Unlocking potential trains NEET young people over a 12 week course to gain qualifications and improve their employability from interview skills to food hygiene. Young people on the programme are supported to move into jobs, apprenticeships, volunteering and training

YMCA

YMCA has a presence in a bespoke training centre in Banbury's George Street operating the Youth foundation learning centre. Foundation Learning programmes offer a combination of vocational learning, personal and social development and functional skills from which people can pursue further education. They can progress in a number of directions including diplomas, apprenticeships or GCSEs. FL can also help them into independent living or supported employment.

The training is directed at young people who are NEET or at risk of becoming NEET. The main focus in the Banbury Centre is on 16-19 year old NEET young people who are at risk of becoming homeless.

The provision also supports young people who feel unable to engage in FE provision due to learning difficulties and/or disabilities.

During the past 2 years, YMCA have engaged with 91 young people, offering Information, Advice and Guidance, and delivering four full time Foundation Learning courses, one Level 1 Retail Award and one full time Level 1 Employability and

Personal Development Diploma. All of the programmes also include mandatory Maths and English Functional Skills qualifications. With the exception of 21 learners who left the course either due to non-attendance or leaving the local area, all other learners have achieved their personalised learning plans.

The Youth Foundation Learning Centre is supported with funding by Cherwell District Council and Sanctuary Housing.

Banbury Foyer

Banbury Foyer is run by Sanctuary Housing to offer supported housing for vulnerable young people. It has undergone phase one of an extensive refurbishment, which has included improving the shared kitchen facilities to enable young people to develop their cooking skills. A volunteer provides fun budgeting and cooking sessions to help the young people prepare for independent living.

Food Bank

A food bank is run at the People's Church Banbury. Usage has increased dramatically during the year, although people are restricted to 3 visits. A range of agencies including health visitors and citizen's advice bureau can refer to the Food Bank.

The Beacon Centre

The Beacon centre provides services for single homeless people and meets at a building behind St Marys Church. Visitors have access to purchase hot food at reasonable prices, companionship and advice as well as the possibility of being referred to other agencies such as GPs, Mental Health services etc. The centre has a small personalisation fund which has been used to provide necessities such as work boots or travel expenses which could help people back into work.

Total visits to centre	4855
Total visitors	282
Visitors helped by targeted support	91

Cherwell Bond Scheme

Applicants to the Cherwell Bond Scheme have a financial assessment for affordability to help with maintaining a tenancy. When required, they are referred to Citizens Advice Bureau for financial advice.

Fixers

Sanctuary Housing has worked with Fixers on a national project which enhances young people's self-esteem and increases their employability. The Fixers Charity say

“Fixers chose the issue they want to fix and, using the skills of a team of creative experts, they work out how to make sure their message is heard by the right people, whether that’s through a unique film, a leaflet or poster campaign, a website, an event or workshop. Then they use digital, print and broadcast media to make their voice heard as far and wide as possible.”

In Cherwell, 26 Fixers are being supported by North Oxfordshire Academy and Making Life Work (The Hill), are doing a piece of work on Youth Work. The Bretch Hill Fixers shot their documentary encouraging young people to consider youth work as a career on Thursday 30 January 2014.

OYAP

The Bretch Hill Youth Action Team started in Autumn last year, funded by Sanctuary’s Cherish Cherwell Fund the project engages with young people by harnessing their ideas and enthusiasm to explore things that interest them and then enable them to organise and run community events, a raft of successful community events have been delivered in the Brighter Futures area during the year including the ‘Bretch Hill Creative Christmas’ event – a creative party event, with artists and photographers doing activities, and members of the community bringing and sharing food. The vocal band attended to do some carol singing and volunteers, helped with young people with disabilities from the Let’s Play Group and the pop choir kids.

As a longer term project the Bretch Hill Action team set themselves the ambition to redesign and landscape the outside of The Hill, which has remained untouched for over 40 years. Landscape designer, Jeremy Sacha, comes to work with them on designs and plans to include lighting, seating, shelter, bike racks, a picnic area, a new path and a community garden.

Ensuring there are high quality affordable housing options and opportunities in Banbury

New housing units

Cherwell District Council has seen the first year of delivery of the ambitious Build! Programme. In the Brighter Futures area there has been a dual benefit. The Council has provided shared units of a good standard which also offer residents opportunities for education and training to lead to employment. The units have been provided as part of a regeneration project which targets empty homes or those in need of refurbishment, which provides a benefit for the whole community.

We have also seen homes delivered through our registered provider partners, including homes to rent and for sale as shared ownership, for example in Middleton Road.

25 new housing units have been delivered in the Brighter Futures area this year. This includes 4 x 2 bed maisonettes which have been refurbished and 8 new homes

in Middleton Road, which include a 3 bed bungalow with adaptations for a disabled occupant, a much needed addition to the housing stock. In addition 4 homes were brought back into use by the delivery team.

Homes improved through Council action

A total of 59 homes have been improved through the intervention of the Private Sector Housing Team. No special initiatives have been undertaken in the Brighter Futures wards this year, but the 3 wards together account for 54% of the team's reactive work, with Grimsbury and Castle alone accounting for 30%.

Further information:

Theme Lead: Kate Winstanley
Cherwell District Council (Housing Team)

Key Partners: Any voluntary sector group pertinent to a particular issue would be invited onto the theme sub-group: Other link agencies/ staff are:

- Sanctuary Housing Group, Central Government (DCLG) Citizens Advice Bureaux, Homes and Communities Agency, Oxfordshire County Council, Banbury Community Church, Oxford and Cherwell Valley College, Housing and Habitat for Humanity, BPHA, Age UK
- Benefit support, debt counselling, debt prevention – JCP, CDC's Benefits Advisors, Citizens Advice Bureaux, Christians Against Poverty, Banbury Food Bank

Theme 5: Health and Wellbeing

This theme has an overall objective to improve life expectancy and reduce health inequalities through improved overall health and well-being. It is linked to the following programme objectives:

- Improve life expectancy with improved overall health and well being
- Reduce the clear inequality gaps with low life expectancy
- Reduce the high rates of teenage pregnancy

Achievements 2013/14

Improve access to health services for BME communities

48 additional South Asian women took up cervical screening from two GP Practices. Programme continuing on a cycle. More GP practices keen to engage in roll out face to face programme

Reduce high rates of teenage pregnancy and 18 conceptions

Rates had continued to fall in line with national statistics. Local services are focussed on ensuring that young people have access to sexual health information and advice. GP practices and community groups are more proactive, Oxfordshire County Council recruiting 2 workers to support outreach programme in 2014/15. New staff will be working in partnership with Equality and Access Team

Work to support carers- increase the number of carers in GP Practices accessing carer's breaks

Up to January 2013, more carer breaks have been given to carers in the Banbury Practices. The County Council has had more requests for carers' assessments which traditionally lead to more carer breaks. Closer working with the Dementia Alliance in Oxfordshire has encouraged better dissemination of information to target groups

Improve access to benefits- Citizens Advice Bureau Outreach Services in GPs surgeries

This is continuing, but no data available at present.

Early diagnosis

NHS Health Checks- 3,395 eligible patients (those aged 40-74 and not on a risk register) have accessed a health check across the 6 Banbury centre GP Practices. This represents an uptake of 18.22% against PH England target of 20%. One practice is still to submit data, which might account for the missed target.

Community cohesion and diversity, including local community events

Several health promotions held with the Evergreen Group (Chinese community); East Timorese Community; African and Caribbean Community and the host Banbury community. Over 150 people were contacted via events, fairs and community engagement exercises

Health Promotion

Smoking Cessation- 210 people in the 4 Banbury wards have quit smoking in Qs 1-3, including pregnant smokers. Launch of the 'Smoke Free Pledges' in Feb 13. This project, funded by BFIB, is to target hard core smokers to encourage them to keep their home and car smoke free to protect other family members, especially children. 5 people signed a pledge at the launch event.

Cooking Skills Course- 2013 has been another busy and successful year for the Healthy Cookery project. Courses have continued to run throughout the Banbury area concentrating on areas of deprivation. 18 courses were completed and there have been a total of nearly 90 clients. The courses have run at the Surestart Children's Centres, The Hub, Redlands and St Leonards School. All of the Children's Centres have run 2 or more courses. The courses at Redlands have been working with a small group of adults, and have been separately funded following a grant from one of the clients. The Redlands courses have been 4 weeks in duration and have run 3 times over the year. Further funding has been successfully secured by this trust in order that we continue to work with this group in 2014. Bookings are very strong for 2014, with 5 courses already on the calendar. 2013 also saw a number of men attend the courses for the first time.

Mental Health Awareness – Two half day mental health awareness sessions were facilitated by Mind staff in July and November, with an attendance of 12 people at each event. It was organised for 'front line' staff working in Cherwell District Council, CAB, Job Clubs and other local organisations, where staff are increasingly in contact with clients who have some degree of mental health issues. This was further bolstered by a session in September on Cognitive Behavioural Therapy (CBT) skills which was attended by 19 people and facilitated by Mind staff, courtesy of funding from Brighter Futures.

Further information:

Theme Lead: Maggie Dent
Oxfordshire Clinical Commissioning Group

Key Partners: Any voluntary sector group pertinent to a particular issue would be invited onto the theme sub-group: Other link agencies/ staff are:

- Smoking Advice Service
- Public Health colleagues
- Community Health staff
- Children's centre staff
- Home Start
- Expert Patient Programme
- Sexual health services
- Black and Minority Ethnic Groups
- Learning Disability Trust
- Drugs and Alcohol Team (DAAT).

Theme 6: Safer and Stronger Communities

This theme aims to reduce crime and anti-social behaviour and also works to ensure that local residents feel safe through community engagement activities. It is linked to the following programme objective:

- build a safer more connected community where residents feel socially included

Achievements 2013/14

During the year a number of events have taken place that aim to promote social inclusion and build strong communities. This year the Connecting Communities programme was shortlisted for a national award. Events have included:

- April 2013 – Connecting Communities, “Coming of age” event organised with Age UK and WRVS Cornhill Centre to support older residents of Banbury. It was a very successful event with many residents accessing local information, advice and support provided by nearly 20 local organisations. Age UK used this event as an opportunity to officially launch its ‘Generation Games’ service – initiative a scheme to keep everyone fit and active no matter of age or abilities. Many local residents took part in activities like boccia, bowls and seated exercises. Members of the local Chinese community who attended the event especially enjoyed the Thai-Chi session, which also had an input from Councillor Donaldson, lead member of Brighter Futures Programme.
- July 2013 - the neighbourhood policing team enjoyed a game of rounder’s and BBQ in People’s Park with young people from the Hub at Woodgreen. The event was a really positive and effective way to break down barriers and build relations with the young people in our community. It was also attended by Cherwell District Council Anti-Social behaviour Officer and the Sports Activators who were able to sign post other activities that were going on throughout the summer.

The neighbourhood teams attended a number of summer fetes along with the Connecting Communities event ‘Play Day’ held in People’s Park. The team enjoyed meeting parents and youngsters and took the fingerprints of 300 children during the course of the day who were lining up to have them taken!

- August 2013 - Connecting Communities, ‘BYHP Big Day Out’ – an exciting family day out for residents and families living in the Grimsbury area. Organised with BYHP it was a great opportunity for local people to find out about education opportunities, setting up own businesses, recycling initiatives and many more. Young people were inspired to start new careers; many of them took part in photo sessions prepared by the Banbury and Bicester College who were introducing new courses run by the college.

- September 2013 - Connecting Communities event 'Sport, Health and Wellbeing day held at Spiceball Leisure Centre. This consisted of free swimming and free sports lessons such as boxing and hockey. This was an extremely well attended and successful event.
- November 2013 - a Brighter Futures partnership event where we took part in discussions to improve understanding and share ideas on delivering services to the Brighter Futures wards. Feedback received included:
 - Working with outreach services in St Marys Church to engage with groups gathering and offer help and support for alcohol/drug issues.
 - Additional contact with educational establishments, in particular college students.

We have listened to these suggestions and are working towards implementation with other services.

- Neighbourhood teams spent a total of four weeks throughout January and February actively involved in the running of the Junior Citizen programme. Year six pupils from local schools learn how to stay safe in everyday life by experiencing eight different scenarios and having the chance to practice making a 999 call. The scenarios were interactive with the children making decisions and learning from their mistakes with real life situations.
- The neighbourhood team have also been working closely with retailers and local businesses and as a result 13 new stores at Lockheed Close joined the Cherwell Crime Partnership and new CCTV cameras were installed on site. This is an accredited crime reduction scheme and has close working relationships between retailers, Thames Valley Police and local councils to combat crime, disorder and anti-social behaviour. We have already seen a dramatic reduction in the use of vehicles to cause anti-social behaviour at this location.

The North Oxfordshire Integrated Offender Management Scheme is a long term joint Probation and Police scheme targeting the top 20% of prolific offenders of the area.

The Scheme proactively manages offenders closely on a one to one basis working with the individual to identify the causes their offending and helping them to address these issues. In this respect a multi-agency approach is crucial with officers on the Scheme referring individuals into Drug/Alcohol Treatment, Housing Agencies, Mental Health Charities and Outreach Agencies.

Officers attend local meetings such as JATAC, TTCG, Social Services Case Conferences and Mappa to provide a whole picture of the individual and provide intelligence so that the relevant agency can make informed and constructive decisions.

This whole world approach has proved effective in helping to reduce the local area crime rate and the recidivism rate of those on the Scheme.

Reduce Crime in the Brighter Futures Wards

2013/14	Banbury Town	Ruscote Hardwick Neithrop Hanwell Fields	
All Crime	-10%	-9%	Overall crime continues to fall within both neighbourhoods and across Cherwell & West LPA.
Burglary Dwelling	34%	125%	Due to our burglary rates being so low, the percentage increase equates to a low number of burglaries i.e. 16 – 36 in RHN in a 12 month period.
Arson & Criminal Damage	-60%	-12%	Neighbourhood teams have joined with the Fire service in Spring/summer 2013 to speak to young people within schools, the Hub and The Hill youth club to give talks on criminal damage & arson.
Anti-social behaviour	-11%	-15%	Neighbourhood teams have worked closely with partner agencies to deter young people away from ASB. This has included rounder's matches with Police, regular attendance at schools/youth projects to get to know our young people, effective use of ABC/ASBO's and referrals to Thriving Families scheme.

Recreation & Sport Activator – Safer and stronger communities

1. Reduction in crime rates

The initiative aims to reduce anti-social behaviour by using free and fun diversionary activities to engage young people 8-16Yrs. The Activator sessions can be delivered in a wide variety of settings and don't need fixed facilities to run so can take opportunities to hotspot locations across the district.

The project has had a positive effect throughout the district working with a collective attendance of over 7,000 young people which is 1,200 individual participants. Intelligence from the local street wardens, police and voluntary youth partners have informed us that when sessions are running there are noticeably less young people hanging around and causing issues in the community and a trend in reduced anti-social behaviour acts.

2. Work with partners to ensure local residents have opportunities to participate in their communities

The Activator initiative is delivered in partnership with a number of organisations and groups from both the voluntary and public sector who meet regularly as a steering group to support and direct the programme. Partners include the Police, voluntary youth clubs and organisations, Early Intervention Hubs, Street Warden's, Schools, Town Councils and health professionals.

The partnership uses local intelligence to direct the project encouraging all members of the community to participate at all levels through a "sports for the whole

community” approach, Provide opportunities for all regardless of ability or ethnic heritage.

3. Activities to target key groups to reduce offending

The initiative takes new opportunities to young people in their local settings using a “doorstep” sports approach accessing hard to reach groups using alternative sports as an engagement and diversionary tool. The project provides a reactive service and can be delivered in areas of need where young people have been highlighted as needing support.

4/Partnership projects to tackle local issues

- Family fun days to strengthen communities
- Play Day events to showcase what opportunities and organisations and opportunities are running in the district for young people
- Activate Banbury initiative to deliver targeted sessions in Brighter future wards

Further information:

Theme Lead: Inspector John Batty
Thames Valley Police

Key Partners: There are a number of forums for dealing with prolific offenders, crime and disorder issues, community development objectives and family support involving joint working with:

- Thames Valley Probation
- Oxfordshire County Council: Youth Offending Services, Social Services and Fire Service
- Cherwell District Council Housing, ASB and Environment, Cleansing and Street Wardens
- Registered Social landlords
- Community groups and voluntary providers linked to a range of bodies including the Community Development team of Oxfordshire CC, Cherwell DC, and The Hill Youth Club

4. New Funding Initiatives in 2013/14

During the course of the year a number of opportunities arose which required additional funding to extend the targeted activity in the Brighter Futures wards. These are as follows;

Providing support and mentoring to vulnerable families in Grimsbury where Home-Start Banbury is unable to work due to lack of funding.

- *By working with disadvantaged families when their children are young, combating social exclusion, and improving the stability of the family environment.*
- *Trained volunteers are carefully selected visit families in their own home. This support is individually-designed and needs-led. A grant of £10,000 has been awarded to Home-Start.*
- *The support of Home-Start will help to prevent children already on the Child Protection Register from being taken into the care of the Local Authority.*

Deliver an introduction to Cognitive Behavioural Therapy (CBT) skills session for 'front line' workers in the North locality.

- *To have increased knowledge of Cognitive Behavioural Therapy (CBT) skills and learn how to use them to support their work with people and situations where some psychological knowledge would be valuable.*
- *Learning will be demonstrated through interactive sessions and role play of case studies. The session will benefit approximately 25 attendees.*
- *This should result in joint working between the Health & Well Being theme lead and the theme lead for Employment Support & Skills as well as successful mental health awareness*

Set-up and the development of Credit Union services in the Brighter Futures area

- *Finding access points for customer service where "point of sale" advertising will take place.*
- *A grant of £6,700 has been awarded to the Credit Union.*
- *Recruiting and training volunteers to offer and explain Credit Union services.*
- *Targeting people with a need to develop budgeting skills to open a budget account and to plan ahead for possible loans rather than needing a loan as a short term "fix".*

- *Promoting a savings and budgeting habit and avoiding doorstep and payday loans.*

Trips for Children and Families from The Sunshine Centre

- Improved personal and social development
- Enhanced self –esteem and confidence
- Improved social behaviour
- Raised aspirations
- New Experiences
- Fun
- Four summer trips to different attractions including the coast
- A grant of £1,000 has been awarded to The Sunshine Centre

5. Looking Forward - Priorities for 2014/15

Theme Priorities for 2014/15

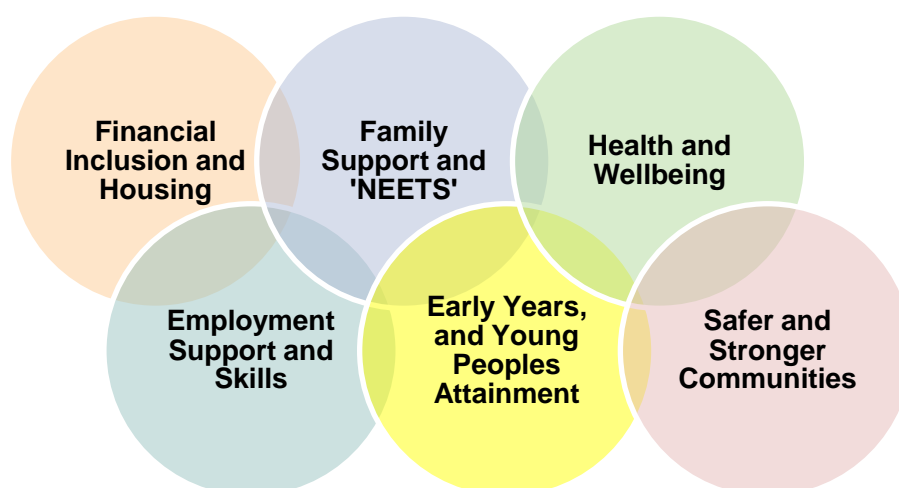
As the Brighter Futures in Banbury is a long term programme, aimed at breaking cycles of deprivation and disadvantage, part of this long term approach is an annual process of review is undertaken. The six theme leads have reviewed their areas of responsibility and considered future opportunities. Examples include capitalising on the on-going success of the Banbury Early Intervention Hub, continuing to build upon the successful programme of Connecting Communities events, using the new relationships and opportunities afforded by the new Oxfordshire Clinical Commissioning Group and working to communicate the impacts of welfare reform. There remains a deep commitment to building safe and strong communities, tackling health inequalities and supporting educational attainment and aspiration.

The recently obtained 2011 census information has identified changes in the make-up of the ward population in relation to a big increase in private rented households, an increase in single adults, lone parents and HMOs, increasing ethnic diversity, from 11% minority groups in 2001 to 24% in 2011 and specific need such as a lack of qualifications of lone parents. The Programme will be reviewing the implications of these changes.

It is anticipated that there will be a greater emphasis by OCCG in 2014/15 on tackling health inequalities which supports perfectly with the emphasis placed on this through the health and wellbeing theme.

Each of these themes, and the objectives and priorities that underpin them, contribute to the longer term aims of the programme, reflect local needs and issues and takes into account the impact of factors such as the recession, availability of housing, accessibility of public services, changes to the benefits system and educational attainment. Each theme aims to work at a local level to ensure that tangible outcomes are delivered to help improve quality of life and opportunities across Banbury.

Following this review, the Brighter Futures in Banbury Programme for 2014/15 will continue to be comprised of the six themes highlighted below. Each of these is supported by a series of priorities, projects and activities and these will form the basis of performance reports for the coming year.



Theme 1: Early Years, Community Learning and Young Peoples Attainment

This theme aims to ensure that children get off to the best start in life, that young people, families and communities are supported in their aspirations and that educational attainment supports opportunity to build a long term economically independent futures.

1 Working to improve educational outcomes across all key stages

Narrowing the gap for our most disadvantaged and vulnerable children

- Improved outcomes for children who access pupil premium funding
- Improved outcomes for SEND children achieving L4 at KS2

Raising achievement for all children and young people

- Increase the number of children in good or outstanding schools
- Increase the numbers of children attaining a good level of development at the end of the EYFS
- Increase the numbers of children who achieve the national expectation in phonics at Year 1
- Increase the numbers of children who achieve 2b in reading at KS1
- Increase the numbers of children who achieve the national expectation in reading, writing and maths at KS2
- Increase the numbers of young people who achieve 5 GCSEs at A*-C including English and Maths
- Increase number and % of number of families (attending the children's centres that have a positive outcome that promotes early child/parent interaction and communication e.g. PEEP, Parents Involvement in their Children's Learning (PICL), Webster Stratton Incredible Years

Improving leadership and governance of schools

- Improve the number of schools where leadership and management/governance is judged to be good or outstanding
- Build capacity through training such as subject leader training.

Working with the Local Authority:

- Schools identified as requires improvement (RI) or inadequate are supported by School Intervention Leaders, Early Years Advisory Teachers, Inclusion Consultants, English As an Additional Language (EAL) Consultants and broker other professionals to meet the schools needs for school improvement
- Governing bodies are supported by the governor services who provide training, targeted support, documentation
- Provide training (bespoke, targeted and continuing professional development)
- Provide opportunities for working in partnership
- Signposting, giving advice, sharing information via newsletters, schools news, website
- Work in conjunction with Oxfordshire Safeguarding Team to ensure children are kept safe
- Support school with assessment, pupil tracking, moderation and data analysis and inspection

Working in partnership with:

Working with the Oxford and Cherwell Valley College more closely

- Further develop the joint links are now being forged the college

Other Providers

- The aspiration Network (funded) will improve teaching and learning for pupils and staff skills
- Sunshine Centre, East Street and Britannia Road Children's Centres
- Community, Childcare and Play team (OCC)
- The Banbury Academy Trust (Dashwood, and Banbury School)
- Diocese – Catholic and Anglican providing school improvement support to schools
- Every Child Projects (funded) will continue to improve outcomes in reading, writing and mathematics
- Maths Advisory Support Teacher Training (MAST) project training leading maths teachers
- Development of Leading Teachers (funded) in Mathematics, Writing and Early Years to support and model good practice, improving pupil outcomes
- Reading Recovery initiative (funded) to improve the quality of teaching of reading and specific needs
- The Oxfordshire Reading Project (funded) to raise attainment in reading
- Assisted Reading for Children in Oxfordshire (ARCh) recruits, trains and supports volunteers to encourage children to develop lifelong love of reading?

- The Oxford Brookes KS1 project (funded) to raise attainment at KS1?
- The Oxfordshire Teaching School ?
- The Private, Voluntary and Independent sector including: preschools, day nurseries, child minders, children centres

2 Reducing the need for exclusions in Banbury schools

- Working with hub staff, the primary and secondary partnership to reduce exclusions
- Developing a secondary inclusion resource at Banbury secondary schools to improve attendance and reduce the need for exclusions, linking to police to develop restorative practice approach and local businesses to provide positive opportunities for young people

3 Focusing on the needs of vulnerable families accessing pre-school and using local child-minders or children centres.

- Encouraging take up of places for 2 year olds in good or outstanding settings
- Increase the number of children in good or outstanding settings
- Increase the number of children and families accessing good or outstanding children centres
- Support smooth transitions throughout the Early Years Foundation Stage and into Year 1
- Offer effective services for providers including information, advice, training, quality improvement and business support to ensure child care is of the best quality
- Identifying and supporting families and children with particular needs working with a multi-agency approach e.g. speech and language
- Keeping all children safe by reducing the number of safeguarding incidents in childcare provision
- Increase the number and percentage of population of families from target groups accessing children's centres
- Increase the percentage of child-minders in the Brighter Futures area that receive Good and Outstanding OFSTED results

Theme Lead: Oxfordshire County Council

Theme 2: Employment Support and Skills

For 2014/15 this theme will focus on the three primary objectives outlined in the local economic development strategy. They aim to promote all aspects of economic development; supporting local people, local business and creating a local environment in which businesses can thrive.



The priorities for action are grouped around these three key objectives:

1	Developing people: help into work through skills, apprenticeships and job clubs
	<ul style="list-style-type: none"> • Run Job Clubs in Banbury • Enhance work readiness skills and apprenticeships available locally
2	Developing business: promoting enterprise and jobs for all
	<ul style="list-style-type: none"> • Increase business start-up investment and expansion • Reduce unemployment levels (as measured by the number of claimants)
3	Developing place: creating an environment that works
	<ul style="list-style-type: none"> • Take action to enhance the appearance of the wards to encourage further investment

Theme Lead	Cherwell District Council
-------------------	----------------------------------

Theme 3: Family Support and Young People not in Employment, Education or Training

The theme is delivered through the Early Intervention Service which includes the Banbury Hub (based at the New Futures Centre at Wood Green) and Children's Centres across Banbury and joined up work with Children's services and partners such as Banbury Job Club and the voluntary sector.

For 2014/15 the priorities are:

1	Reduce persistent absence from School
2	Reduce the number of exclusions from School
3	Reduce the number of young people not in employment, education or training
4	Reduce the number of young people offending, including first time entrants to the criminal justice system
5	Reduce teenage pregnancy rates
6	Reduce the levels of children and young people admitted to hospital for non-accidental injuries including self-harm
7	Improve foundation stage profile results for vulnerable and disadvantaged groups
8	Reduce incidences of inappropriate caring responsibilities
9	Improve attendance and attainment of children looked after

Theme Lead: Oxfordshire County Council – Early Intervention Hub

Theme 4: Financial Inclusion and Housing

For 2013/14 this theme remains focused on two key objectives. Firstly it works to ensure that there are strong and accessible advisory and support services for those facing challenging financial situations and the second objective aims to ensure that there are high quality affordable housing options and opportunities available in Banbury.

The project seeks to ensure opportunities for skills development through initiatives such as the self-build programme and works to ensure housing solutions are sustainable by providing related advisory and support services such as debt advice.

The table below highlights the priorities that underpin these two objectives and the performance measures that will be used to track progress.

1	Ensuring that there are strong and accessible advisory and support services for those facing challenging financial situations and prevent people getting into debt
	<ul style="list-style-type: none"> The number of young people and adults in Brighter Futures areas receiving interventions on debt and money issues (including benefits) from Citizens Advice Bureau
	<ul style="list-style-type: none"> The number of young people and adults in Brighter Futures areas receiving help with employment, education and training opportunities from volunteer connect
2	Ensuring there are high quality affordable housing options and opportunities in Banbury
	<ul style="list-style-type: none"> The number of new units of housing delivered in Brighter Futures areas and the number of empty properties in Brighter Futures areas undergoing regeneration works and being brought back into use
	<ul style="list-style-type: none"> The number of private sector housing grants awarded to residents living in Brighter Futures areas
	<ul style="list-style-type: none"> Reducing the number of people accepted as statutorily homeless from Brighter Futures areas

Theme Lead:	Cherwell District Council
--------------------	----------------------------------

Theme 5: Health and Wellbeing

This theme has an overall objective to improve life expectancy and reduce health inequalities. Underpinning this priority is a series of objectives and activities that aim to improve health and wellbeing in the broadest sense through the provision of health improvement programme and addressing issues such as access to health services, take up of services for example screening, activities to promote healthy lifestyles and work to support cohesive communities.

The table below highlights the priorities within this theme:

1	Reduce the risk of premature deaths from smoking.
	<ul style="list-style-type: none"> • Increase the number of smoking quitters • Increase the number of pregnant women quitting smoking • Increase the number of 'Smoke Free' pledges made
2	Reduce the risk of premature deaths from heart disease
	<ul style="list-style-type: none"> • NHS Health Checks for 40- 74 year olds • Cooking skills sessions in targeted wards
3	Reduce the number of teenage conceptions
	<ul style="list-style-type: none"> • Local service provision as part of the Teenage Pregnancy Strategy.
4	Improve support to carers
	<ul style="list-style-type: none"> • Improve the number of carers identified by GP Practices. • Increase the number of carers accessing breaks. • Promote carers support with BME groups.
5	Improve access to benefits
	<ul style="list-style-type: none"> • Increase the number of people accessing benefits through the Benefits in Practice contract. • Benefits in Practice once weekly sessions in Hardwick surgery (West Bar branch) and Horsefair surgery
6	Improve access to health services for BME communities
	<ul style="list-style-type: none"> • Improve uptake of cervical screening in women from South Asian community • Improve access to diabetes education sessions for patients from BME communities.

Theme Lead: Oxfordshire Clinical Commissioning Group

Theme 6: Safer and Stronger Communities

This theme aims to reduce crime and anti-social behaviour and also works to ensure that local residents feel safe and secure. Performance is measured through local crime figures and key activities cover both crime reduction and community engagement activities.

1	Reduction in crime rates
	<ul style="list-style-type: none"> • Reducing anti-social behaviour • Reducing repeat offending • Reducing serious acquisitive crime rates • Reduction in violent crime
2	Work with partners to ensure local residents have opportunities to participate in their communities
	<ul style="list-style-type: none"> • Delivery of the Connecting Communities Programme - a series of community events that provide local people with improved opportunities to access services and to provide feedback about local priorities
3	Activities to target key groups to reduce offending
	<ul style="list-style-type: none"> • Integrated Offender Management Project • Targeted and specific support to vulnerable people, families and children in need (link to the Oxfordshire County Council Thriving Families Programme)
4	Partnership projects to tackle local issues
	<ul style="list-style-type: none"> • JATAC - Joint Agency Tasking and Co-ordinating Group to help identify and join up around local problems • Work to improve the night-time economy through strengthened local partnerships • Enhanced Neighbourhood Policing • Banbury Youth Partnership

Theme Lead:	Thames Valley Police
--------------------	-----------------------------

6. Contacts

General Contact:

Role and Organisation	Email
Ian Davies Overall Programme Lead Cherwell District Council	ian.davies@cherwellandsouthnorthants.gov.uk
Louise Tustian Programme Performance Cherwell District Council	louise.tustian2@cherwellandsouthnorthants.gov.uk 01295 221786

Theme Leads:

Theme and lead partner	Name and Email
Early Years, Community Learning and Young Peoples Attainment Oxfordshire County Council	Sue Currie Pam Beal Michelle Jenkins Michelle.jenkins@oxfordshire.gov.uk Sue.currie@oxfordshire.gov.uk Pam.beal@oxfordshire.gov.uk
Employment Support and Skills Cherwell District Council	Steven Newman steven.newman@cherwell-dc.gov.uk
Family Support and young people not in employment, education or training Oxfordshire County Council	Helen Kilby helen.kilby@oxfordshire.gov.uk
Financial Inclusion and Housing Cherwell District Council	Kate Winstanley kate.winstanley@cherwell-dc.gov.uk
Health and Wellbeing Oxfordshire Clinical Commissioning Group	Maggie Dent Maggie.dent@oxfordshireccg.nhs.uk
Safer and Stronger Communities Thames Valley Police	Inspector John Batty John.Batty@thamesvalley.pnn.police.uk

Contact the Cherwell Local Strategic Partnership

Representative	Email
Councillor Barry Wood Cherwell District Council	councillor.barry.wood@cherwell-dc.gov.uk ;
Sue Smith Cherwell District Council	sue.smith@cherwellandsouthnorthants.gov.uk
Councillor Gibbard Cherwell District Council	councillor.gibbard@cherwell-dc.gov.uk
Councillor Kieron Mallon Oxfordshire County Council	councillor.kieron.mallon@cherwell-dc.gov.uk ; meg.peacock@oxfordshire.gov.uk
Jackie Wilderspin - NHS Oxfordshire	jackie.wilderspin@oxfordshirepct.nhs.uk ;
Maggie Dent Oxfordshire Clinical Commissioning Group	maggie.dent@oxfordshireccg.nhs.uk
Chief Superintendent Colin Payne Thames Valley Police	gillian.rawlins@thamesvalley.pnn.police.uk ;
Sally Dicketts/Lee Nicholls Oxford and Cherwell Valley College	phallam@ocvc.ac.uk LNicholls@ocvc.ac.uk
Keith Watson Bicester Chamber of Commerce	keith.watson2@hotmail.co.uk
Kevin Minns - Kidlington Voice	kevin.minns@minns.co.uk
Jon Bright - ORCC	jon.bright@oxonrcc.org.uk
Revd Jeff West - Faith Communities	curate@stmaryschurch-banbury.org.uk
Jim Flux MBE, Cherwell Community and Voluntary Services	jimflux@tiscali.co.uk
Paul Angus Banbury Sound Radio Station	paul.angus@banburysound.co.uk
Assia Bibi Sunrise Multicultural Project	Assia.mcphp@yahoo.co.uk ;
Trish Redpath Kidlington Parish Council	clerk@kidlington-pc.gov.uk
Sue Mackrell Bicester Town Council	sue.mackrell@bicester.gov.uk
Mark Recchia Banbury Town Council	mark.recchia@banbury.gov.uk
Simon Kearey Oxfordshire County Council	simon.Keary@oxfordshire.gov.uk

List of Data Tables and Figures included within the appendix:

Theme 1 – Appendix 1 - 5	Table 1:	KS2 Reading, writing, maths %L4+ 2013 compared to Oxfordshire
	Table 2:	KS2 Reading, writing and maths %L4+ 2013 for All SEN children
	Table 3:	Good level of Development 2013 % compared to national and Oxfordshire
	Table 4:	KS1 reading 2013 (% level 2+) compared to 2012, national and Oxfordshire
	Table 5:	% of pupils making expected progress in reading compared to 2012 national figures
	Table 6:	% of pupils making expected progress in maths compared to 2012 national figures
	Table 7:	% of pupils making expected progress in writing compared to 2012 national figures
	Table 8:	Key Stage 1 - % of pupils reaching Level 2 in writing
	Table 9:	Phonics screening 2013
	Table 10:	Reading, writing and maths at KS2
	Table 11:	Secondary data - Increase the numbers of young people who achieve 5 GCSEs at A*-C including English and Maths
	Table 12:	Exclusion Data
	Table 13:	Increase the number of children in good or outstanding settings.
	Table 14:	Raising achievement for all children and young people
	Table 15 & 16:	EYSEN Team involvement with families and children with additional needs.
Theme 2	Table 1:	Population, deprivation and housing summary
	Figure 2:	Number of Job Seekers Allowance claimants
	Figure 3:	% of Job Seekers Allowance claimants
	Figure 4:	Numbers claiming Employment Support and Incapacity Benefits
	Figure 5:	% claiming Lone Parent Benefits
	Figure 6:	Numbers claiming Lone Parent Benefits in the Brighter Futures Wards
	Figure 7:	% of 16-18 Year Olds Not in Education, Employment or Training
	Figure 8:	Number of 16-18 Year Olds Not in Education, Employment or Training
	Figure 9:	Percentage claiming Carer Benefits
	Figure 10:	Numbers claiming Carer Benefits
	Figure 11:	Life Expectancy
	Figure 12:	Teenage Pregnancy

Theme 6	Figure 13	Criminal Damage (including Arson) Incidents
	Figure 14	All Crime Incidents

Programme Performance Measures

Theme 1 - Theme 1 Early Years, Community Learning and Young People's Attainment

Appendix 1 a - Children entitled to Pupil Premium Funding:

The government believes that the pupil premium is the best way to address the current underlying inequalities between children eligible for free school meals (FSM) and their peers by ensuring there is funding to tackle disadvantage and that this reaches the pupils who need it most. The premium is given directly to the school and is in addition to the schools general funding.

Table 1

KS2 Reading, writing, maths %L4+ 2013 compared to Oxfordshire 2012 figures are not available due to change in assessment - not comparing like with like.				
Ward	2013 %	2012 %	National 2013 %	Oxfordshire 2013 %
Banbury Grimsbury and Castle	77.3	N/A	64% (invalidated) (data)	62.5
Banbury Ruscote	62.5	N/A		

In most of the primary schools pupil premium children qualifying for the premium achieve well. Schools have spent their money on more staffing/one to one tutor and extra resources and this has impacted positively. Schools in these wards perform better than other schools in Oxfordshire.

Children living within the Banbury, Grimsbury and Castle wards who qualify for the 'pupil premium' attain well compared to Oxfordshire and nationally.

Appendix 1b - Improved outcomes for SEN children achieving L4 at KS2

Table 2

KS2 Reading, writing and maths %L4+ 2013 for All SEN children compared to 2012 and Oxfordshire				
Ward	2013 %	2012 %	National 2013 %	Oxfordshire 2013 %
Banbury Grimsbury and Castle	40.0	44.4	N/A	32.3
Banbury Ruscote	25.6	32.3		

Appendix 1c - Increase the numbers of children attaining a good level of development at the end of the EYFS

Table 3

Good level of Development 2013 % compared to national and Oxfordshire (all provisional)			
Ward	Ward %	National %	Oxfordshire %
Banbury Grimsbury and Castle	41.8	52	48
Banbury Ruscote	40.4		

This assessment was new in 2013 and cannot be compared to previous data. A GLD is indicating those children who are ready to access the KS1 curriculum. The children in these wards start school at a very low level, often with speech and language difficulties. Rigorous moderation ensured that this data is accurate – 3 out of 6 of the primaries had a visit from a moderator and all attended relevant and statutory training on the new assessment.

Appendix 1d - Increase the numbers of children who achieve 2b+ in reading at KS1

Table 4

KS1 reading 2013 (% level 2+) compared to 2012, national and Oxfordshire				
Ward	2013 %	2012 %	National 2013 %	Oxfordshire 2013 %
Banbury Grimsbury and Castle	82.1	86.3	89	89
Banbury Ruscote	75.2	82.6		

As a result of this data, schools are taking part in the Oxfordshire Reading Campaign and volunteers from ARCh are helping improve reading skills. Individual schools data shows that three schools attain above national in reading. The 2013 dip is mainly due to the dip in performance of two schools.

ARCh and the Reading Project are already working to improve outcomes. This is where there is the biggest need for support to help these young children improve their reading particularly in Ruscote – what can we do in BFIB to enhance and support reading for KS1 children? You can see by KS2 chart below the gap narrows as they get older see chart below.

Appendix 1e – Primary Reading, Writing and Mathematics Key Stage 2 data

Reading - Table 5

% of pupils making expected progress in reading compared to 2012 national figures these are English due to change in assessment				
Ward	2013 %	2012 %	National 2013 %	Oxfordshire 2013 %
Banbury Grimsbury and Castle	90.0	93.3	88	90
Banbury Ruscote	88.5	93.0		

Maths – Table 6

% of pupils making expected progress in maths compared to 2012 national figures.				
Ward	2013 %	2012 %	National 2013 %	Oxfordshire 2013 %
Banbury Grimsbury and Castle	93.8	90.0	88	89
Banbury Ruscote	78.2	93.0		

Writing – Table 7

% of pupils making expected progress in writing compared to 2012 national figures.				
Ward	2013 %	2012 %	National 2013 %	Oxfordshire 2013 %
Banbury Grimsbury and Castle	98.8	93.3	92	93
Banbury Ruscote	89.7	93.0		

Table 8

Key Stage 1 - % of pupils reaching Level 2 in writing compared to 2012 national figures.				
Ward	2013 %	2012 %	National 2013 %	Oxfordshire 2013 %
Banbury Grimsbury and Castle	80.3	74.7	85	86
Banbury Ruscote	76.2	75.2		

Appendix 1f (Table 9) - Phonics screening 2013 (Working at expected level) compared to 2012, national and Oxfordshire - Year 1's only

Ward	2013 %	2012 %	National 2013 %	Oxfordshire 2013 %
Banbury Grimsbury and Castle	58.5	35.9	69	69
Banbury Ruscote	54.6	50.9		

Appendix 1g (Table 10) - Reading, writing and maths at KS2

KS2 reading, writing, maths % L4+ 2013 compared to 2012, national and Oxfordshire 2012 figures are English and Maths %L4+ due to change in assessment				
Ward	2013 %	2012 %	National 2013 %	Oxfordshire 2013 %
Banbury Grimsbury and Castle	76.3	71.1	74	77
Banbury Ruscote	63.2	73.3		

Once again schools in Banbury, Grimsbury and Castle performs in line or better than national. There is a dip in Banbury Ruscote data in 2013. This dip is due to two

schools scoring particularly low on this indicator. The other four schools are broadly in line with national.

Schools have an opportunity to participate in a range of Every Child projects – designed to improve outcomes in reading, writing and maths. Four of the schools are involved in these. As part of the LA statutory duties two schools had their phonics screening checked and 1 school had its KS1 results moderated

Appendix 1h (Table 11) - Secondary data

Increase the numbers of young people who achieve 5 GCSEs at A*-C including English and Maths

Name of school:	% achieved A*-C in English and Maths in 2013	% achieved A*-C in English and Maths in 2012
Banbury Academy	65	51
BGN	61	64
North Oxfordshire Academy	48	59

The lower scores at **North Oxfordshire Academy** are only one indicator the school uses to measure performance.

Intake: KS2 shows significantly downward skew, therefore significantly weaker intake than national.

Value added for best 8 (GCSEs and equivalents) is significantly stronger than national, first achieved in 2012 and consolidated in 2013. This is achieved by using level 2 courses beyond GCSE.

Expected progress in English is above national at 75% (Nat 69%).

Expected progress in maths is 56% (Nat 70%) [the school did use early entry but did not have the impact needed]

Pupil premium performance is good in English (68% making expected progress) and needing improvement in maths (56% making expected progress).

At GCSE maths, Science Core and Humanities are the areas to improve.

The school has used a broader curriculum to demonstrate stronger progress.

It is making progress, but now areas of GCSE (especially mathematics) need to improve.

Appendix 2 (Table 12) - Exclusion Data

Ward	Exclusion No.s:
Grimsbury and Castle	11
Banbury Ruscote	23

These were for a variety of reasons, mainly Key Stage 2 children.
This is a reduction on previous year's data. More data is available from the hub

Appendix 3a (Table 13) - Increase the number of children in good or outstanding settings.

Ward	Name of setting:	Ofsted rating:
Grimsbury and Castle	St Leonard's Montessori	New setting so not yet inspected
Grimsbury and Castle	Rainbows Day Nursery	Satisfactory 01/07/2013
Grimsbury and Castle	East Street Early Years (managed by Grimsbury Family Association)	Good 17/04/2012
Grimsbury and Castle	St Mary's Playgroup	Good 18/04/2009
Grimsbury and Castle	Child First	Good 27/09/2013
Grimsbury and Castle	Smart Tots	Good 21/05/2013
Ruscote	Sunshine Day care & Tots are us	Inadequate 30/10/13

Four of the settings are 'good'; one is 'satisfactory' and one is awaiting an inspection as newly opened.

Appendix 3b (Table 14) - Raising achievement for all children and young people. Increase the number of children in good or outstanding schools

Current Status

Grimsbury and Castle	2 'good' primary schools 09/03/2012 St Leonard's and 14/01/2014 Dashwood Academy	1 'requires improvement' 10/10/2012 St Mary's CE
Ruscote	2 'requires improvement' 16/05/2013 William Morris and 28/11/2012 St Joseph's RC	1 'inadequate' 03/07/2013 Orchard Fields- but improving rapidly and expected to be good soon.
Neithrop	No schools	No schools
Secondary covers all wards North Oxfordshire Academy Banbury Aspirations Academy BGN	'good' 31/01/2013 'satisfactory' as Banbury School 14/09/2010 'good' 8/03/2012	

'Requires improvement' schools are being supported by School Intervention leaders and are on track to become 'good' in the next year.

Appendix 3 – EYSEN Team involvement with families and children with additional needs.

(Table 15) April to July 2013

Ward	Number of families	Multiagency involvement		Support given to setting
		Children's Therapy services	Community Paediatrician	
Grimsbury and Castle	6	100%	100%	100%
Neithrop	6	100%	66%	83%
Ruscote	6	100%	83%	83%

We have worked with 18 families within the 3 wards. All 18 have had children's Therapy service involvement. And 83% have involvement from Community Paediatrician Team. 89% of the children have been supported by the EYSEN Team in their pre-school settings.

66% (i.e. 4 of the 6 settings) in Grimsbury and Castle have received support from the EYSEN Team.

100% (i.e. the one setting in Ruscote) has received support from the EYSEN Team.

(Table 16) August to December 2013

Ward	Number of families	Multiagency involvement		Support given to setting
		Children's Therapy services	Community Paediatrician	
Grimsbury and Castle	3	75%	75%	100%
Neithrop	3	100%	66%	100%
Ruscote	6	66%	40%	100%

We have worked with 12 families within the 3 wards. 80% of the children have had children's Therapy service involvement. And 60% have involvement from Community Paediatrician Team. 100% of the children have been supported by the EYSEN Team in their pre-school settings.

84% (i.e. 5 of the 6 settings) in Grimsbury and Castle have received support from the EYSEN Team.

100% (i.e. the one setting in Ruscote) has received support from the EYSEN Team.

Appendix 4 - Increase the number and percentage of population of families from target groups accessing children's centres

The overall number of families accessing East Street, Britannia Road and Sunshine Centre has stayed the same as previous quarter i.e. 62% of families with children under five living in the Brighter Futures wards have accessed a children's centre.

The number of lone parents accessing a children's centre has increased in all centres i.e. Britannia Road 24.49% (increase from 18.37%) East Street 36.76% (increase from 32.75) Sunshine Centre 59.49 (increase from 58.46)

The Number of workless families reached for the quarter July –September is Britannia Rd 24, East Street 71, and Sunshine Centre 168

Children's centres are now recording the number of families who have a positive Achieve Economic Wellbeing outcome For the quarter July – September 2013 25% of workless families reached at Britannia Road received a positive outcome; 15.49% of workless families seen at East Street received a positive outcome and 44.64% of workless families seen at Sunshine Centre received a positive outcome

The number of fathers attending across all 3 centres has increased by 1.83% this quarter compared to previous quarter.

29 teenage parents across all 3 centres have been reached this quarter which is a reduction of 2 from the previous quarter.

The percentage of BME families reached as % of BME population for each area for the period 2012-13 is as follows 14% Britannia Rd; 27.3% Sunshine Centre and 45.3% East Street. Figures for the quarter July – September 2013 is Britannia Road 25.3%; East Street 38.4%; Sunshine Centre 29.4%.

Appendix 5 - Increase the percentage of child-minders in the Brighter Futures area that receive Good and Outstanding OFSTED results

There 24 child-minders registered on the Early Years register working in the 3 wards. 7 of the 24 are waiting for their first OFSTED inspection. Of the 17 that have been inspected 10 have a good or outstanding Ofsted judgement which is 58%. Training and support is offered to child-minders to improve their practice and best prepare for their Ofsted inspection visits.

Appendix 6 - Theme 2 - Employment Support and Skills

The charts and graphs on the following pages highlight some of the key social and economic data that is used to measure the outcomes of the Brighter Futures in Banbury Programme.

Data is the latest available for the whole year (at time of drafting the report) and more information is available via the Oxfordshire County Council Data Observatory.

The table below provides a population, deprivation and housing summary for the three Brighter Futures wards referred to within this appendix:

Table 1

Population						
	Ruscote		Neithrop		Grimsbury and Castle	
	No.	%	No.	%	No.	%
0-19	2,712	32.0%	1,590	27.1%	2,580	23.7%
20 – 65	4,687	55.3%	3,432	58.5%	7,089	65.2%
Over 65	1,071	12.6%	846	14.4%	1,211	11.1%

Source: ONS 2011 Census – KS102EW

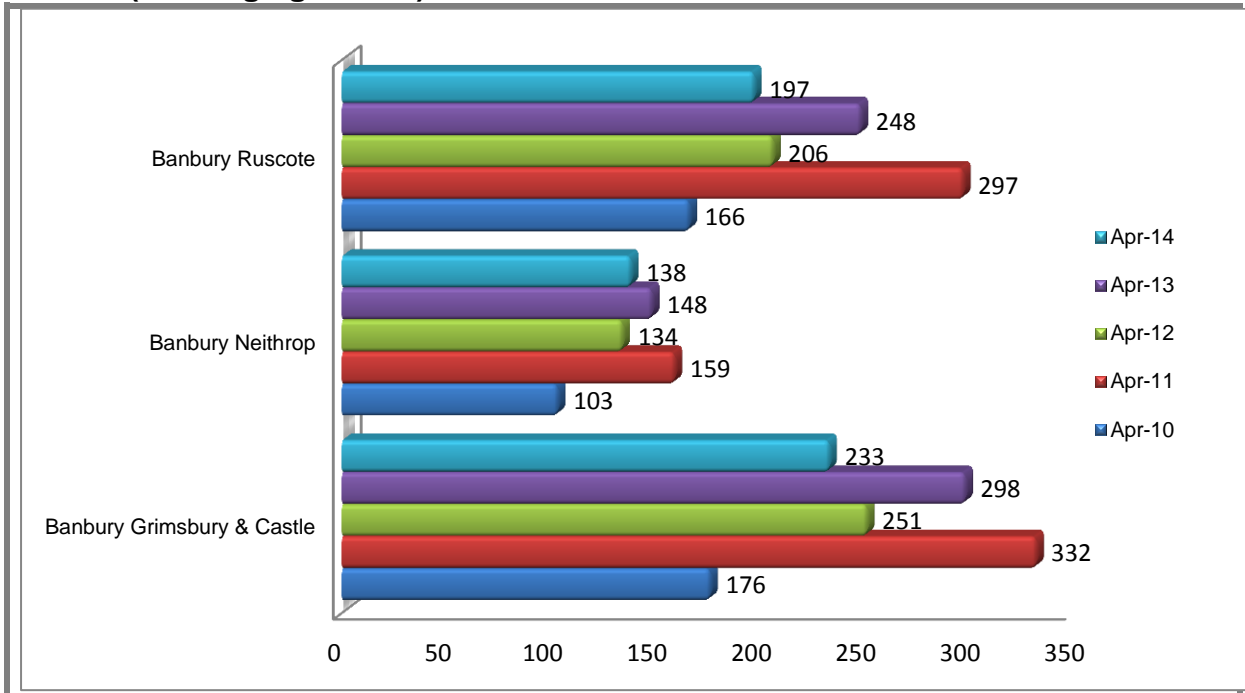
Super Output Areas within the wards that rank in the highest 25% in terms of deprivation (i.e. the 25% most deprived)	
Banbury Ruscote 005A Banbury Ruscote 005B Banbury Ruscote 005D Banbury Ruscote 005E Banbury Ruscote 005F	Banbury Grimsbury and Castle 004A Banbury Grimsbury and Castle 004B Banbury Neithrop 003D

Source: Index of Multiple Deprivation 2010 www.data.gov.uk

Tenure (Home Ownership)						
	Ruscote		Neithrop		Grimsbury & Castle	
	No.	%	No.	%	No.	%
Owned outright (no mortgage)	573	18.3%	493	21.4%	752	15.5%
Owned with a mortgage or loan	1,003	32.0%	803	34.9%	1,374	28.3%
Shared ownership	#	0.1%	#	0.8%	90	1.9%
Social rented (all)	1,259	40.1%	573	24.9%	826	17.0%
Private rented (all)	252	8.0%	381	16.6%	1,756	36.2%
Living rent free	#	1.5%	#	1.4%	54	1.1%

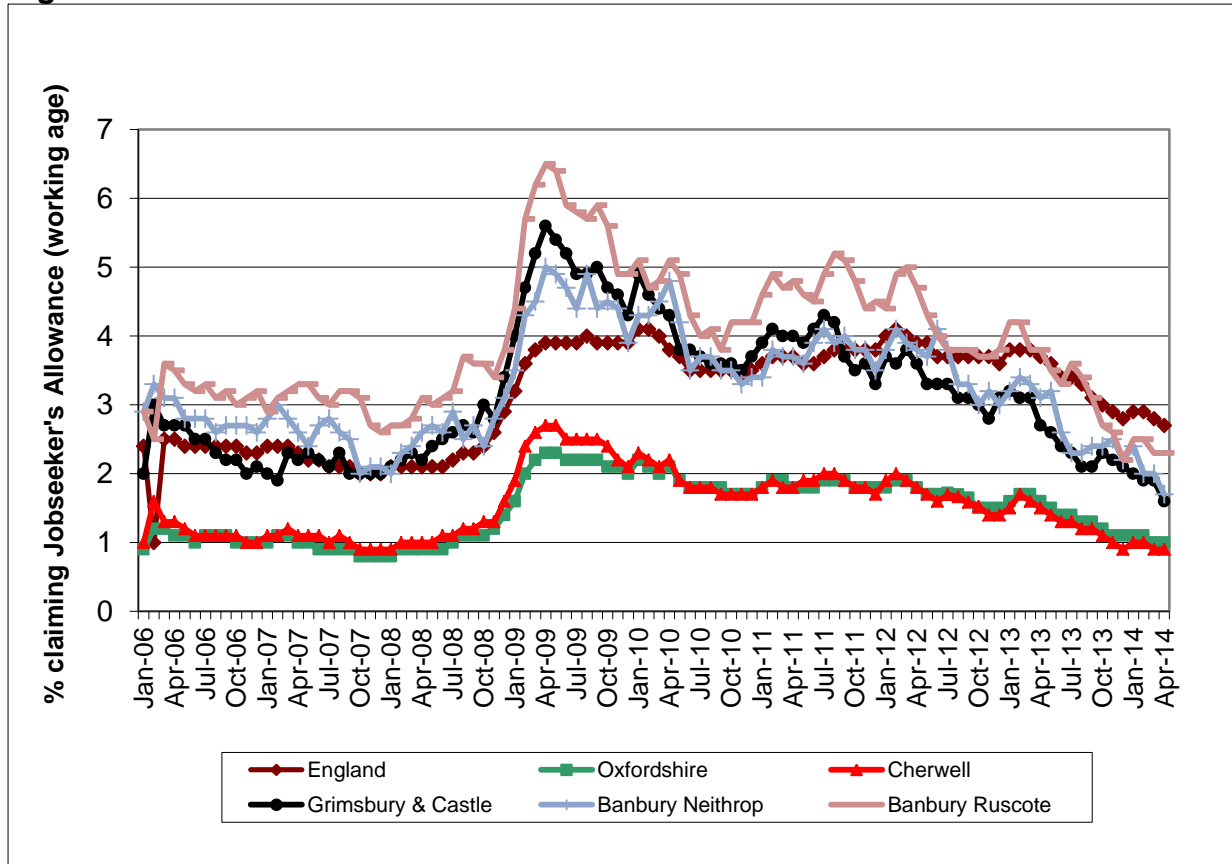
Source: ONS 2011 Census – KS402EW
refers to a number greater than 0 but less than 50.

Figure 2: Number of Job Seekers Allowance claimants in the Brighter Futures Wards (working age 16-64)



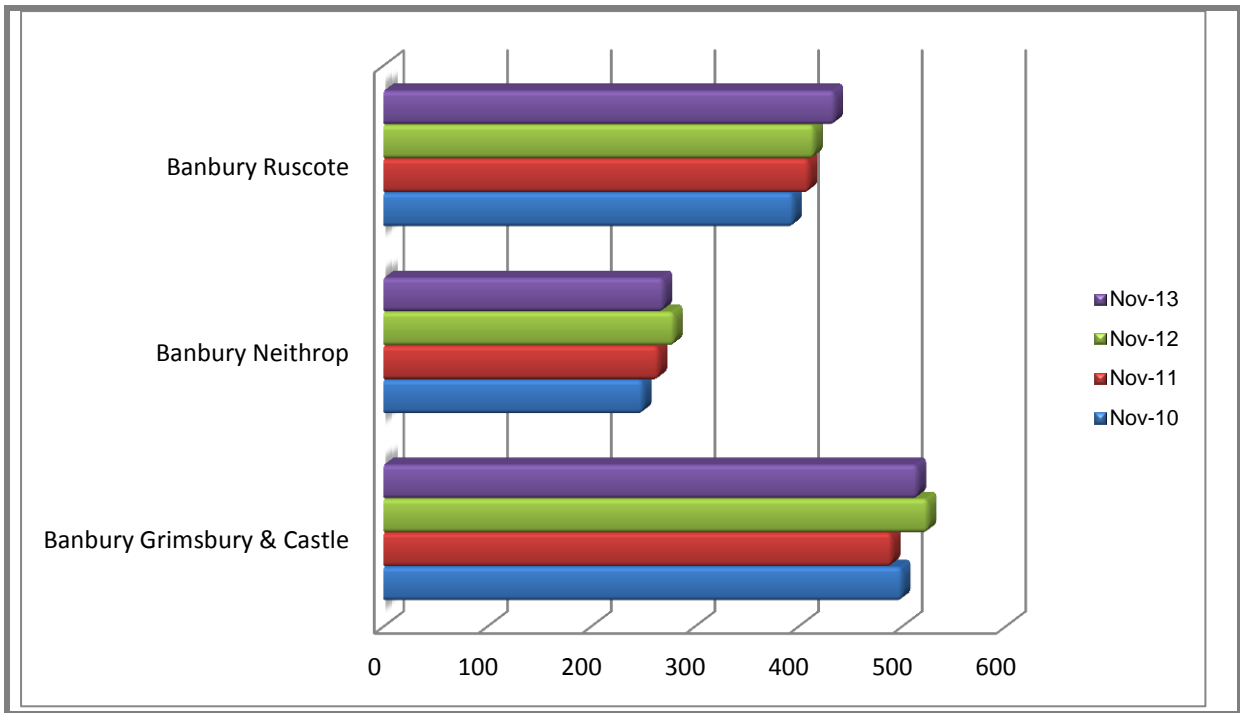
Data Source: Nomis Official Labour Market Statistics (<http://www.nomisweb.co.uk/>)

Figure 3:



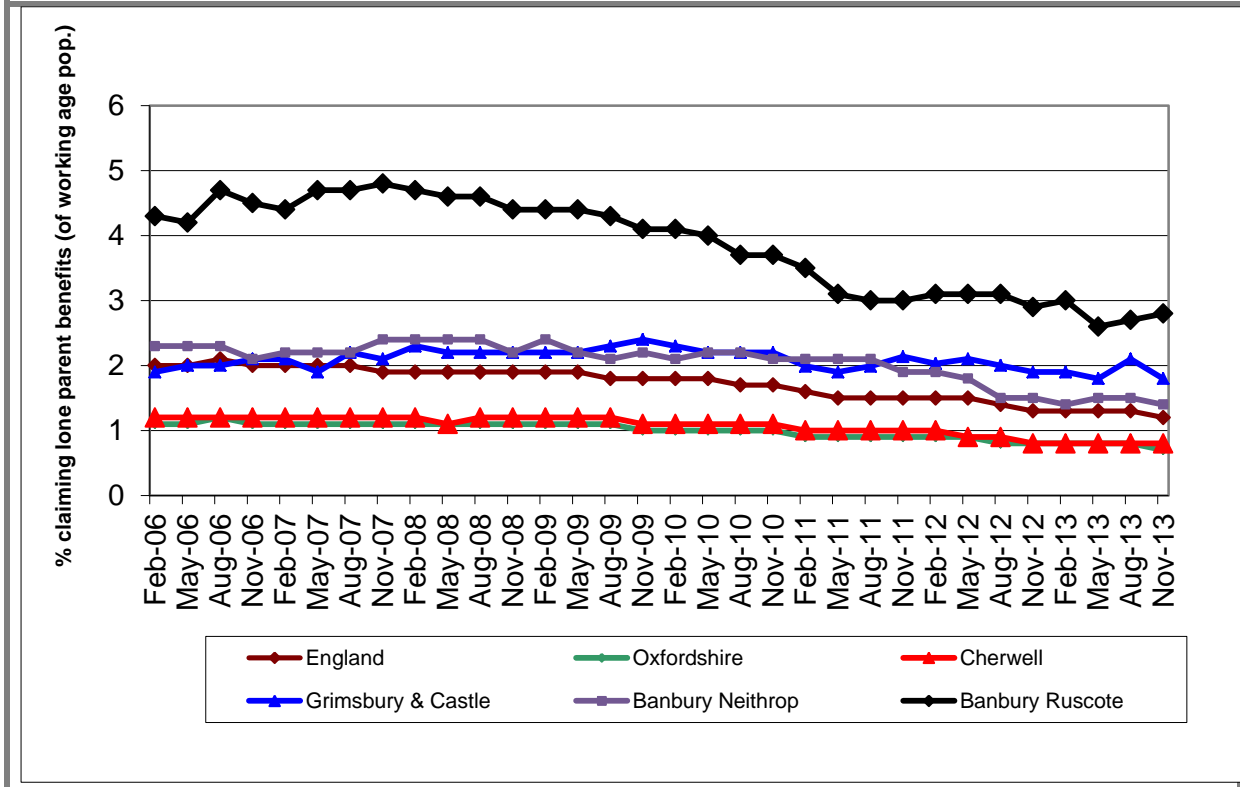
Data Source: Nomis Official Labour Market Statistics (<http://www.nomisweb.co.uk/>)

Figure 4: Numbers claiming Employment Support and Incapacity Benefits
(Nov 13 latest available data)



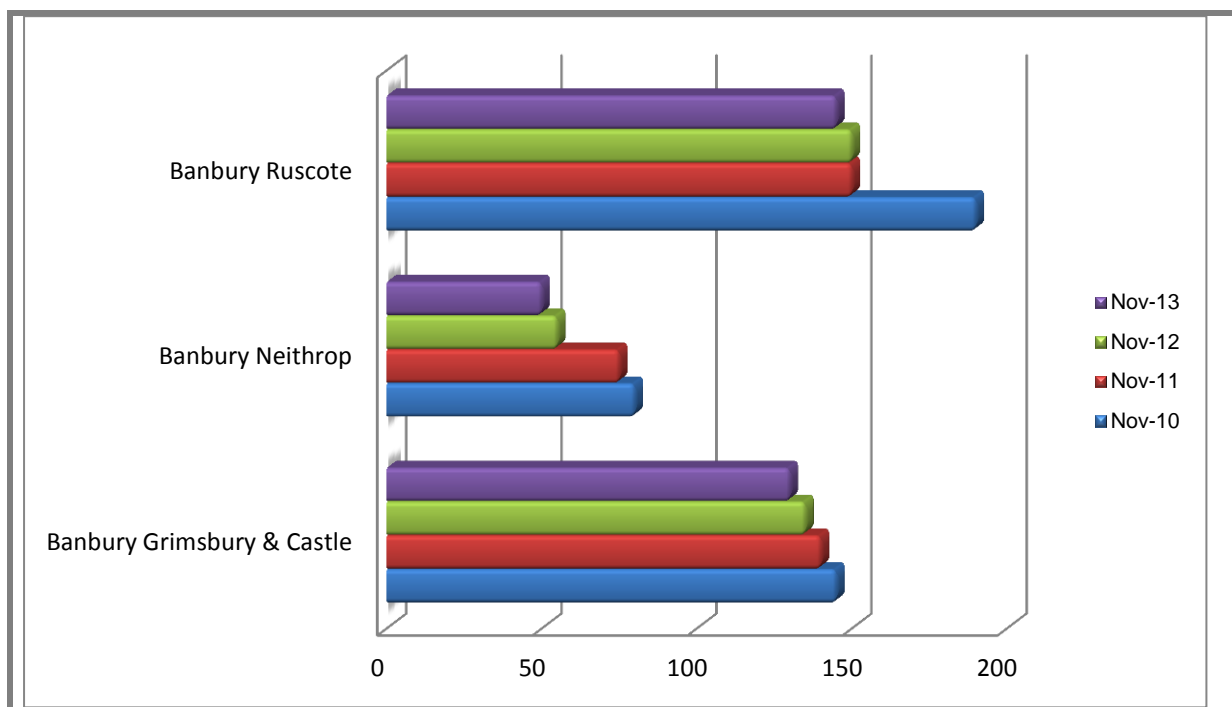
Data Source: Nomis Official Labour Market Statistics (<http://www.nomisweb.co.uk/>)

Figure 5: Percentage claiming Lone Parent Benefits (Nov 13 latest available data)



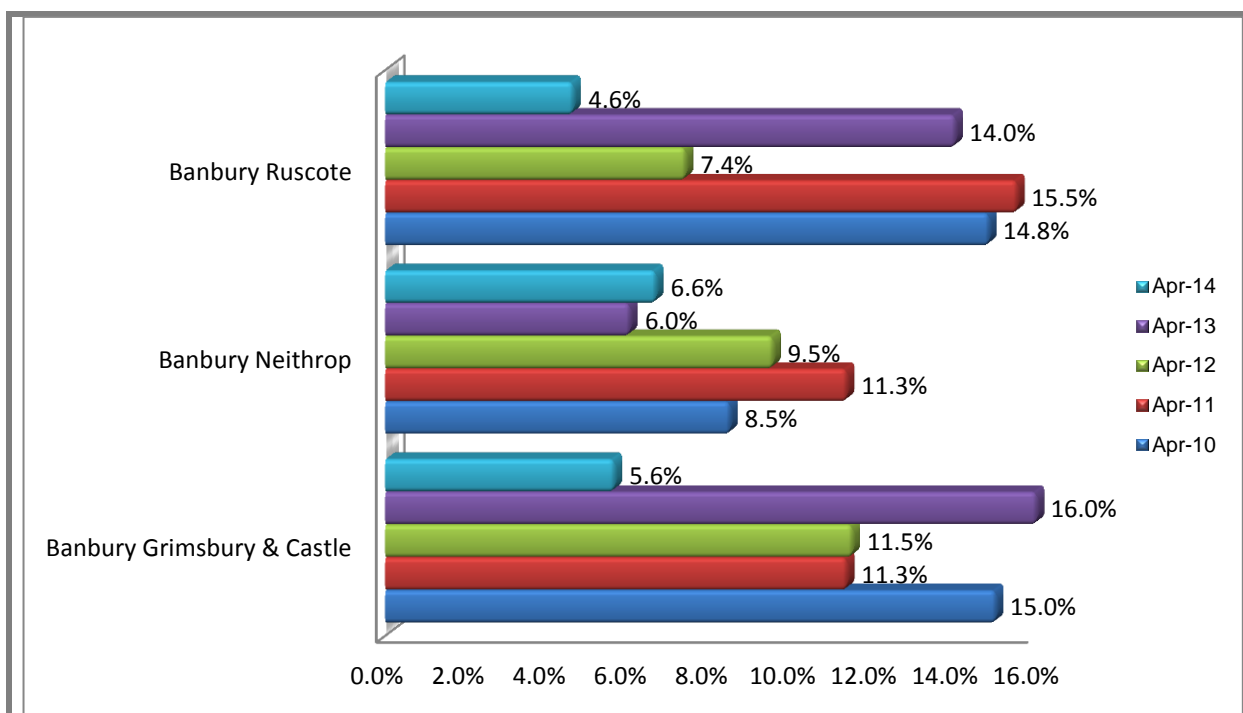
Data Source: Nomis Official Labour Market Statistics (<http://www.nomisweb.co.uk/>)

Figure 6: Numbers claiming Lone Parent Benefits in the Brighter Futures Wards (Nov 13 latest available data)



Data Source: Nomis Official Labour Market Statistics (<http://www.nomisweb.co.uk/>)

Figure 7: Percentage of 16-18 Year Olds Not in Education, Employment or Training



Data Source: Oxfordshire County Council

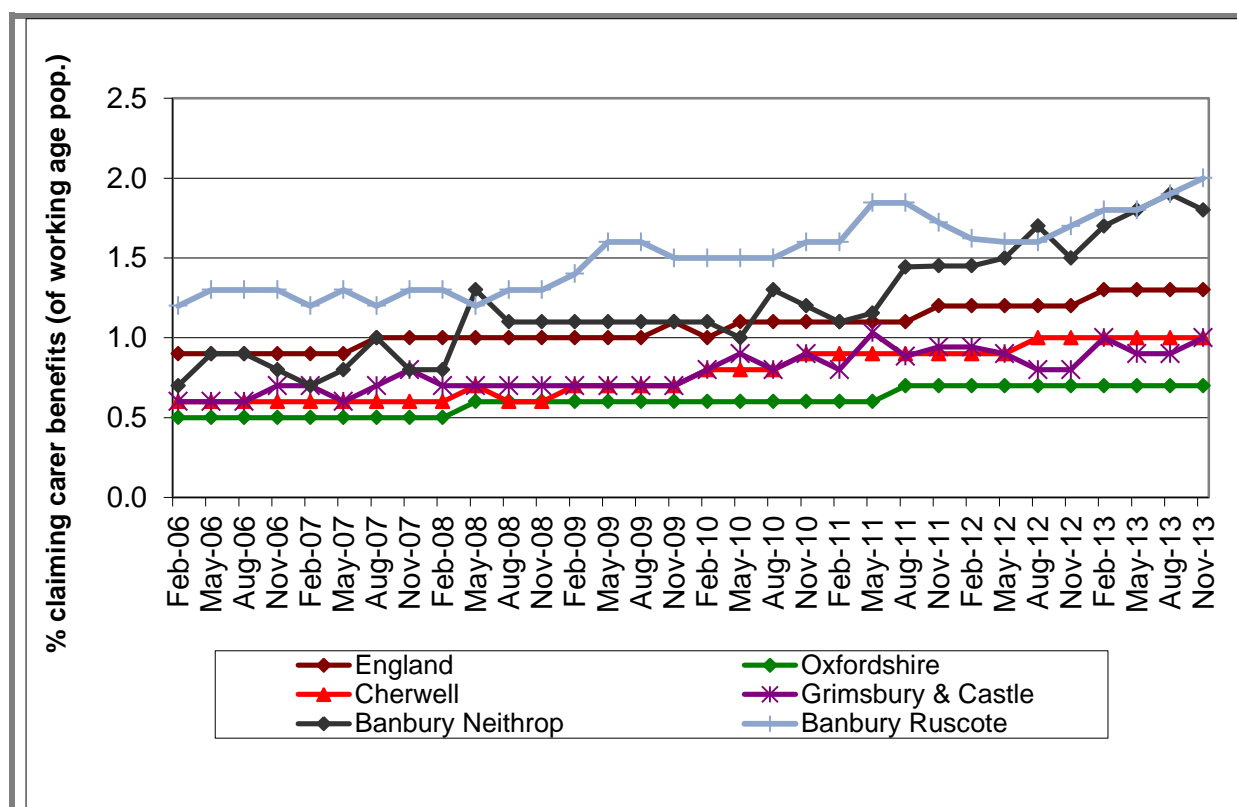
Figure 8: Number of 16-18 Year Olds Not in Education, Employment or Training

Wards	Apr-10	Apr-11	Apr-12	Apr-13	Apr-14
Banbury Grimsbury & Castle	33	28	32	16	14
Banbury Neithrop	11	17	20	6	15
Banbury Ruscote	43	52	28	14	17

Data Source: Oxfordshire County Council

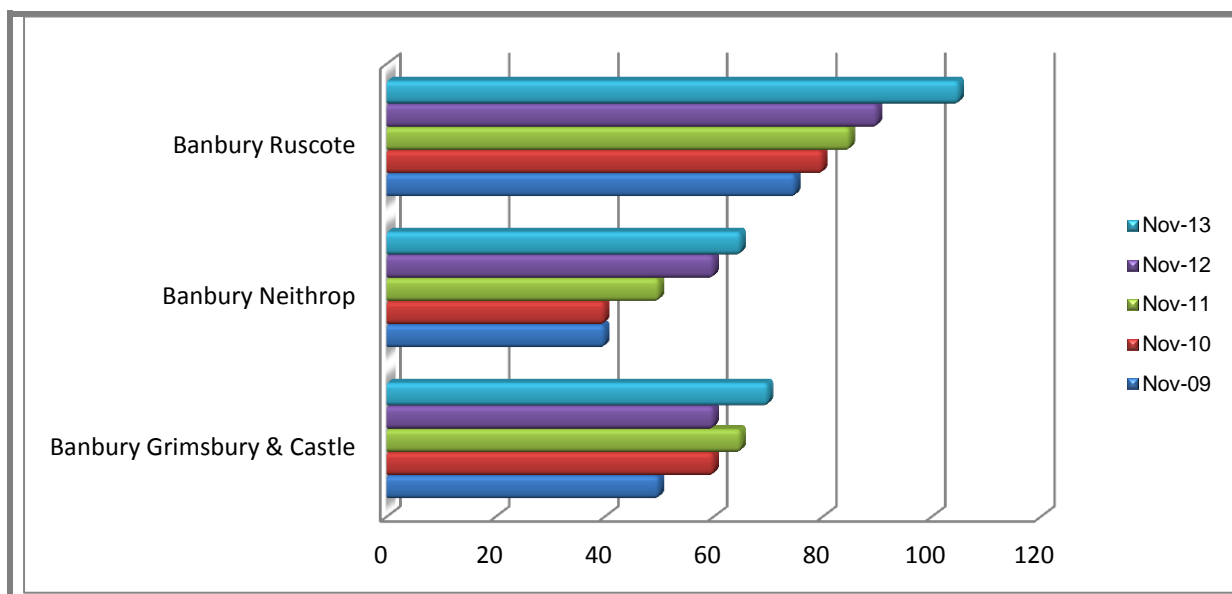
The information in tables 1a and 1b provides a summary of the percentage and number of NEETs over a five year period in the three Brighter Futures wards. The data has been provided by Oxfordshire County Council and refers to young people not in education, employment or training aged 16-18.

Figure 9: Percentage claiming Carer Benefits (Nov 13 latest data)



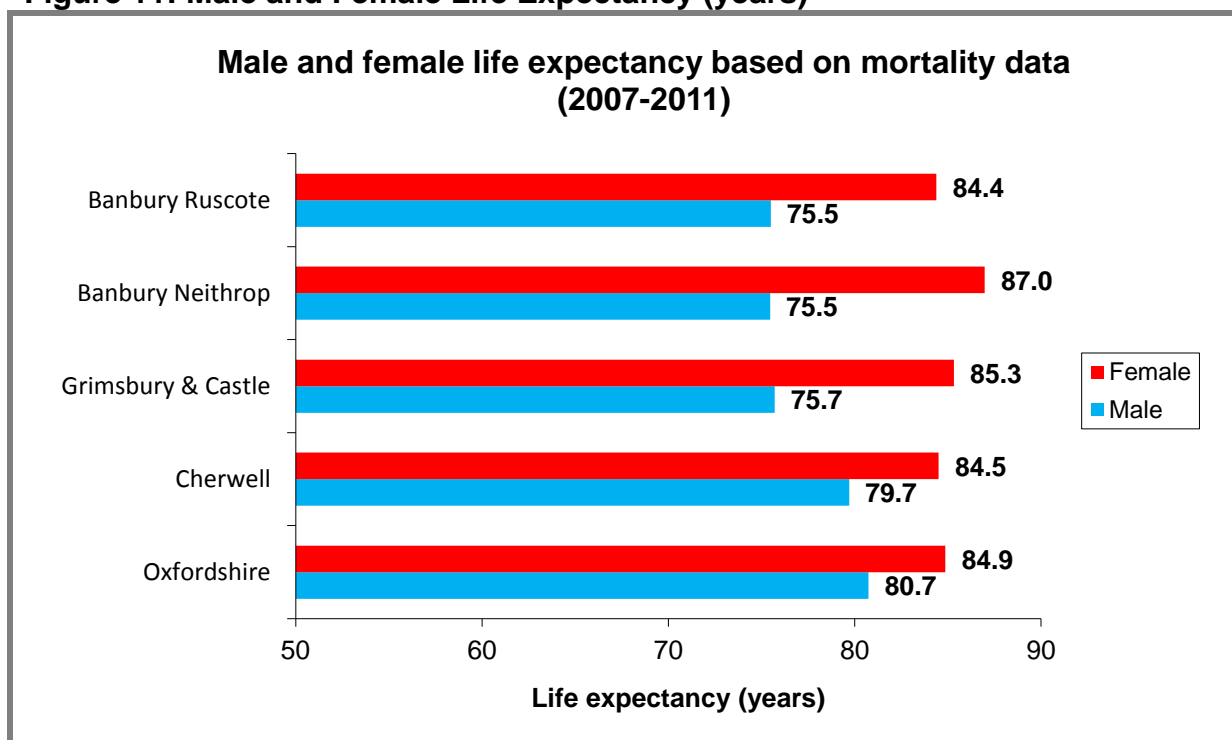
Data Source: Nomis Official Labour Market Statistics (<http://www.nomisweb.co.uk/>)

Figure 10: Numbers claiming Carer Benefits (Nov 13 latest data)



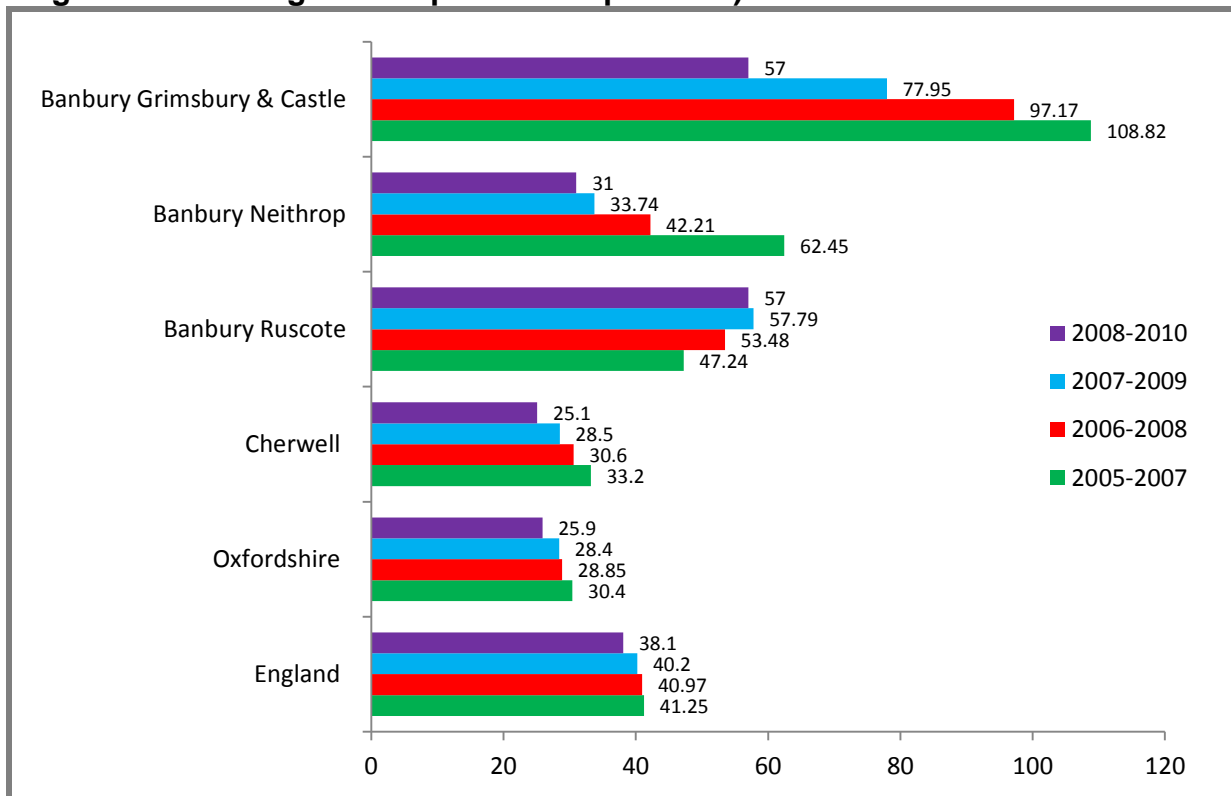
Data Source: Nomis Official Labour Market Statistics (<http://www.nomisweb.co.uk/>)

Figure 11: Male and Female Life Expectancy (years)



Data Source: Oxfordshire NHS

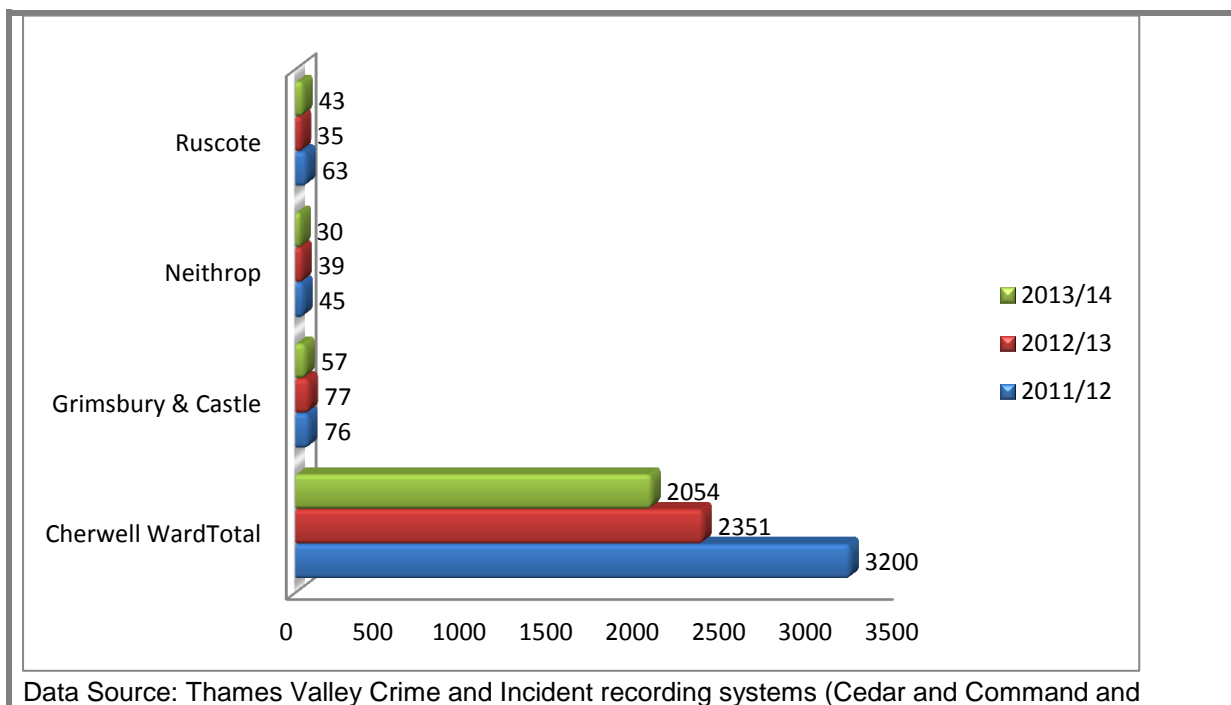
Figure 12: Teenage Conceptions rate per 1000)



Data Source: Oxfordshire NHS

Theme 6 – Safer and Stronger Communities

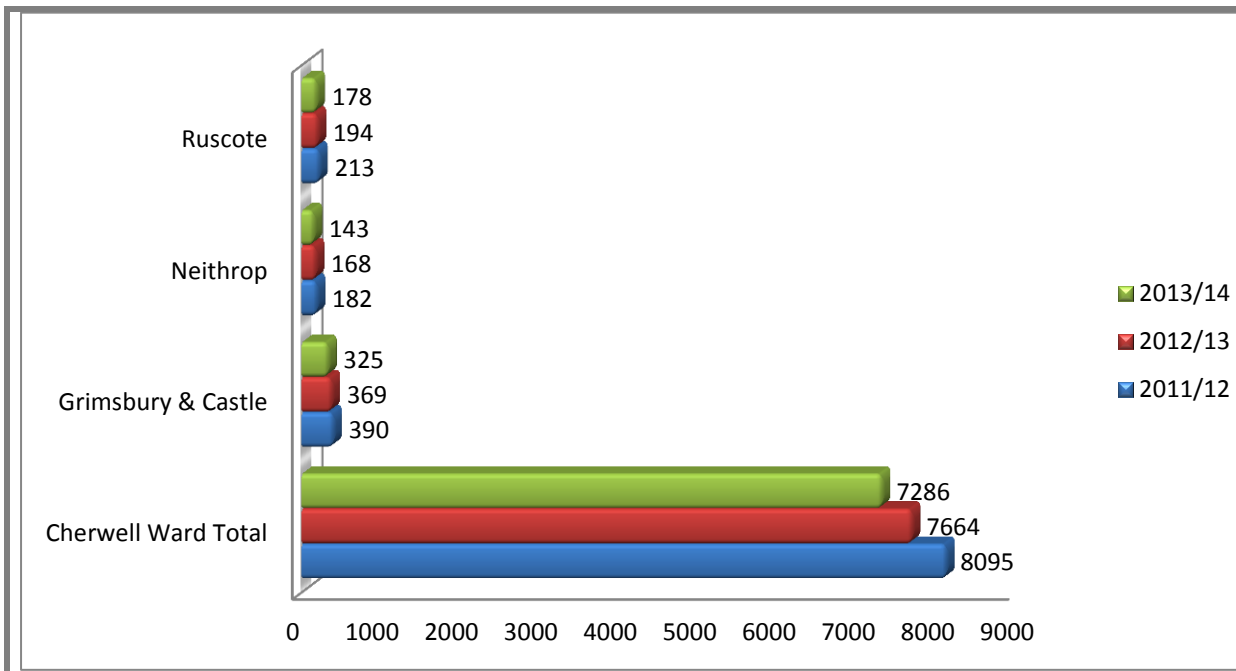
Figure 13: Criminal Damage (including Arson) Incidents



Data Source: Thames Valley Crime and Incident recording systems (Cedar and Command and

Control) Data Extracted April 2014

Figure 14: All Crime (total number of recorded crimes)



Data Source: Thames Valley Crime and Incident recording systems (Cedar and Command and Control) Data Extracted April 2014